

OFFICIAL VISITORS GUIDE



VISIT DELTA COUNTY



VISITDELTA.COM

PETROGLYPHS
HORSEBACK RIDING
KAYAK
PEACHES
LIVE MUSIC
BAFTING

HARD CIDER
PADDLE BOARDING
HIKING
DOMINGUEZ-ESCALANTE NATIONAL CONSERVATION AREA

**YOUR OUTDOOR
ADVENTURE
Starts Here™**

**DRIVE-IN OFF-ROAD
MOUNTAIN BIKING**

SKY DIVING
RIVER
CANYONS
GUNNISON GORGE NATIONAL CONSERVATION AREA

WINE
GRAPES
CAMPING
FOSSILS

FORT UNCOMPAHGRE INTERPRETIVE CENTER
DARK SKIES



WE LOVE DELTA COUNTY



VISITDELTA COUNTY.COM



Welcome to Delta County!



Delta County Tourism
560 Dodge St., Delta
970-874-2108

Delta County is located on Colorado's Western Slope at the base of Grand Mesa, the largest flat top mountain in the world. This region is home to the delightfully diverse communities of Cedaredge, Crawford, Delta, Hotchkiss, Orchard City and Paonia. Delta County's story is one of agriculture pioneers, mining, land, and water development; as a result, we are home to endless opportunities for family fun and adventure.

Delta County offers not only diverse communities, but a distinct and diverse traveler set. From those who crave the multitude of recreation opportunities like biking, rafting and skydiving, to those who prefer to relax at one of our incredibly beautiful wineries, to those who seek out the unique art that can be found throughout the county; Delta County offers it all. Winter, Spring, Summer and Fall, Delta County offers something for everyone!

We invite you to plan your next trip to Delta County and experience the beauty that we call home, we promise, we are worth the drive! For more information: visitdeltacounty.com, call Darnell Place-Wise at 970-874-2108, or connect via email at dwise@deltacounty.com

Events

APRIL 23
Smith Mountain
Ultra Marathon
*Gunnison Gorge
NCA*

APRIL 23
Blue Sage
Presents Javier de
los Santos
*Blue Sage Center
for the Arts*

MAY 7
Ute Trails Car
Show
Hotchkiss

MAY 6-7
Delta Area
Chamber of
Commerce's
Spring Expo
Confluence Park

MAY 6-8
19th Annual
Hotchkiss Sheep
Camp Stock Dog
Trials
Hotchkiss

MAY 7
Delta Area
Mountain Bike
Series
*Hotchkiss -
Crossroads Trail*

MAY 8
An Evening with
Karla Bonoff
*Grand Mesa Arts &
Event Center*

MAY 14
Power of Story
*Blue Sage Center
for the Arts*

MAY 17
Delta Area
Mountain Bike
Series
Confluence Park

MAY 28
Cedaredge Skate
Park Competition
Cedaredge

JUNE 4
Outdoor Heritage
Days

Confluence Park

JUNE 4
Smith Mountain
Rally Gravel/Mtn
Bike
Smith Mountain

JUNE 9-11
Crawford Pioneer
Days
Crawford

JUNE 10
Delta Proud
Delta

JUNE 11
Crazy Raft Race
Confluence Park

JUNE 11
Refind Art Festival
*Grand Mesa Arts &
Event Center*

JUNE 11
Klunker Bike
Downhill Race
Cedaredge

JUNE 11



Comedy Night
*Blue Sage Center
for the Arts*

JUNE 18
Klunker Bike
Downhill Race
Cedaredge

JUNE 23
Music at the
Fairgrounds "The
Solar Brothers"
*Delta County
Fairgrounds*

JUNE 25
Blue Sage
Presents Nelson
Rangell
Azura Winery

JUNE 25
Klunker Bike
Downhill Race
Cedaredge

JULY 2
Tracklocross Bike
Race
Cedaredge

JULY 2-4



Cherry Days
Paonia

JULY 9
Tracklocross Bike
Race
Cedaredge

JULY 9
Delta Proud
Delta

JULY 14
Music at the
Fairgrounds - with
Emma Wise and
David Starr
Hotchkiss

JULY 16
Tracklocross Bike

Race
Cedaredge

JULY 16
Delta Health
Foundation Golf
Classic
Devil's Thumb

JULY 23
Delta Street
Rodders Car Show
Cleland Park

JULY 21 - 24
Deltarado Days
Delta

JULY 23
Delta Alleycat Bike
Race



Events



Delta

JULY 23
Blue Sage
Presents Cary
Morin & Ghost Dog
Azura Winery

JULY 29
Music at the
Fairgrounds
- North Fork
Country -
Community Night
*Delta County
Fairgrounds*

JULY 29 -
AUGUST 6
Delta County Fair
*Delta County
Fairgrounds*

JULY 30
Lands End Gravel
Bike Race
Cedaredge

AUGUST 4-7
International
Serenity Run
Cedaredge

AUGUST 6
Klunker Downhill
Bike Race
Cedaredge

AUGUST 11
Hugh Phillips Band
*Music at the
Fairgrounds*

AUGUST 12
Delta Proud
Delta

AUGUST 13
Klunker Downhill
Bike Race
Cedaredge

AUGUST 14
Music at the
Fairgrounds
*Delta County
Fairgrounds*

AUGUST 20
Klunker Downhill
Bike Race
Cedaredge

AUGUST 27
Hill Climb Bike
Challenge
Cedaredge

SEPTEMBER 3
Hill Climb Bike
Challenge
Grand Mesa

SEPTEMBER 9

Delta Proud
Delta

SEPTEMBER
9-10
Delta's Car Show
and Main St.
Cruise
Delta

SEPTEMBER 10
Pea Green Pedal
Confluence Park

SEPTEMBER 11
Tour de Cedars
Cedaredge

SEPTEMBER 17
Tour de Cedars
High Country Bike
Road Race
Cedaredge

SEPT. 22-25
Mountain Harvest
Festival
Paonia

SEPTEMBER 24
Rattlesnake Ride-
About Mtn. Bike
Race
Cedaredge

SEPTEMBER 30
Community
Concert
Association
*Delta Performing
Arts Center*

OCTOBER 1
Cedaredge
Applefest Skate
Park Competition
Cedaredge

OCTOBER 7-9
Cedaredge
Applefest
Cedaredge

OCTOBER 14
Delta Proud
Delta

OCTOBER 15
Blue Sage
Presents Emily
Ondracek-
Peterson & Anna
Arzumanyan
*Blue Sage Center
for the Arts*

OCTOBER 28
Trick or Treat Main
St.
Delta

OCTOBER 31
Trick or Treat Trail
Cedaredge

NOVEMBER 7
Community
Concert
Association
*Delta Performing
Arts Center*

NOVEMBER 12
Blue Sage
Presents Ka-Wai
Yu
*Blue Sage Center
for the Arts*

NOVEMBER 27
Small Business
Saturday
Delta County

DECEMBER 2
Jingle Mingle
*Grand Mesa Arts &
Events Center*

DECEMBER 2
Parade of Lights
Delta

DECEMBER 3
Parade of Lights
Cedaredge

DECEMBER 10
Blue Sage
Presents Scott
Coulter
*Blue Sage Center
for the Arts*

DECEMBER 30
Delta Health
Foundation Gala
*Heritage Hall at
Delta County
Fairgrounds*





Call us today to schedule an appointment
(970) 874-8739

We are proud to be the
 only AAA Approved
 Repair Facility in
 Delta County!



We are a female owned and operated business offering friendly, high quality service and repairs. Our technicians are ASE CERTIFIED offering the best technical expertise available for repairing your domestic, import or diesel vehicle.



Locals Choice - Visitor Friendly

Check out our Verified Customer Reviews tayshenautomotive.com

We are an Automotive Shop you can Trust!

TAYSHEN AUTOMOTIVE • 105 Eaton Ave. • Delta • 970-874-8739



Your No.1 stop for Fishing, Camping, Cycling, Disk Golf supplies and more to make your stay fun and easy!



"Gambles Ace has the best fishing supplies in Delta County."

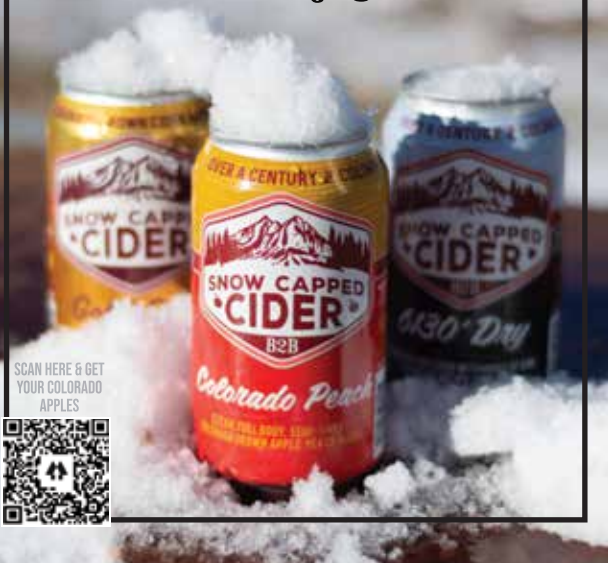
Gambles Ace Of Hotchkiss

121 E Bridge Street • Hotchkiss, CO 81419
 970-872-3535

Colorado Proud
 Delta County grown

SNOW CAPPED CIDER
 FRUIT GROWERS FOR 1912 FIVE GENERATIONS

Taste Colorado estate grown
 award winning ciders



SCAN HERE & GET
 YOUR COLORADO
 APPLES



**Serving
 Cedaredge
 Since
 2001!**



Starr's Guitars

250 W. Main St., Cedaredge

970-856-2331

StarrsGuitars.com

Keep up to date with local news!



Publishing Wednesdays
starting at 67¢ a week or \$32 a year.

Or get your updates online with a digital subscription
67¢ a week, \$2.99 a month, or \$32 for a year

DELTA COUNTY
INDEPENDENT

970-874-4421
circ@deltacountyindependent.com

CEDAREDGE

Aptly named for residing at the “edge of the cedars” of the Grand Mesa, the town of Cedaredge was officially incorporated on March 25, 1907. Cedaredge is the gateway to the Grand Mesa, via the Grand Mesa National Scenic and Historic Byway, which is the world’s largest flat top mountain and offers four seasons of tourism. Spring and summer bring fishing with over 300 lakes, hiking, backpacking, biking, boating, bird watching, 4-wheeling, star gazing, camping and more. Fall and winter offer hunting, snowshoeing, skiing, and ice fishing. All ages and abilities can find world class outdoor recreational experiences on the Grand Mesa.

Cedaredge is also known for its apples, with orchardists who have been growing apples on the same trees for over 100 years, and offers two truly “branch-to-bottle” hard apple cideries; Happy Hollow Hard Cider and Snow Capped

Cider where 100% of the raw ingredients used to make the ciders – the water and all fruit – comes from the Surface Creek Valley.

You will also find three wineries, in Cedaredge; Williams Cellars, Chill Switch Wines, and Stoney Mesa Winery, a multigenerational winery and the state’s oldest continual winery license.

Cedaredge is also home to Pioneer Town; step back into the past with a visit where thousands of authentic artifacts from more than a century ago can be viewed on a nearly six-acre campus. The three iconic Bar-I wooden silos are original to the site and listed on the National Historic Registry, as is the old Stolte Shed fruit packing house, and the cabin of early settlers Otto Peterson and his family. Walk the boardwalk of Pioneer Town’s Main Street where the saloon, country store, and original 1906

Cedaredge jail house can provide entertainment for the entire family. The museum contains a large doll and toy collection, an extensive collection of Indian flint and arrowheads, a lovely arboretum, a collection of antique farm machinery, and a delightful gift shop. Most guests spend 60-90 minutes looking at the many exhibits, but some spend the entire day.

Main Street in Cedaredge is quaint and inviting with an impressive guitar shop—Starr’s Guitars. Dining and the arts round out the main street experience, including the Grand Mesa Arts & Events Center. Wander off Main and find a large selection of antiques, and the largest ice cream cone you will ever see.

And if you are a golf enthusiast, the Cedaredge Golf Club features an 18-hole course with spectacular views, well-groomed greens and great weather!

Three things to do and see in Cedaredge

COMPILED BY THE DCI STAFF

Keep history alive at Pioneer Town

As one of the historical staples of Cedaredge, Pioneer Town offers both education and entertainment for people of all ages. Founded 41 years ago, it is known to change and renew with new exhibits, events and stories every year. The history of the town is ingrained in the preserved buildings, structures and stories, and will only stay alive if the people in town take them to heart.

“Thousands of authentic artifacts from more than a century ago can be viewed on

our nearly 6-acre campus,” explained Jerry McHugh, vice president of the Surface Creek Valley Historical Society. “The three iconic Bar-I wooden silos are original to the site and listed on the National Historic Registry, as are the old Stolte Shed fruit packing house, and the cabin (built in 1886) of early settlers Otto Peterson and his family.”

Pioneer Town will be hosting small events this summer that will be focused on the residents of Delta County, such as pie baking contests, lectures and social events. The beautiful Chapel of the Cross was named 2020’s best wedding venue in Delta County.



Pioneer Town Talks will continue on Thursdays beginning June 3rd. The schedule will be posted at pioneertown.org/ events about one month in advance, along with details about special events at the

museum such as the annual Night On The Town, and an ice cream social.

Located at 388 S. Grand Mesa Drive, Pioneer Town opens May 29 and will be open



10 a.m. - 4 p.m. Thursday through Saturday and 10 a.m. - 1 p.m. on Sundays Memorial weekend through the first week of October. More information can be found at pioneertown.org.

The Sunday Farmers Market — which offers a huge array of produce, farm goods, and art — runs every week from June 6 until Oct. 31. The annual Pioneer Town Antique and Classic Car Show will be held on Saturday, Oct. 2, in conjunction with Cedaredge's three-day Applefest event. Later in October watch as Pioneer Town gets scary with all kinds of spooks and cobwebs at Halloween Nights, then watch the lights and magic of the Christmas Town Market take over in December. There is always something special going on at Pioneer Town.

Try the flavors of Cedaredge

Cedaredge boasts a tempting array of locally crafted foods and beverages, including heritage apples, two branch-to-bottle hard apple ciders, three award-winning wineries, goat cheese from Grand Mesa Creamery, local beef, veggies, Granma Cheryl's killer apple fritters, Rick's Real Bar-B-Que sauces and Bloody Mary mixes, hand-

crafted kettle corn and chocolates... and the list goes on!

The Grand Mesa Creamery, for example, offers artisanal farmstead cheese made by hand in small batches. And the kicker — it's made with goat cheese! They state on their website, "We follow the principle that the healthiest and happiest animals produce the best products. We believe in sustainable agriculture, and a humane natural approach to animal husbandry. It is our desire to create a sustainable lifestyle and business built on the cornerstone of respect for the consumer, land, animals, and the strength of commitment in local communities."

A list of dining options can be found at visitcedaredge.com/dining.html.

Main Street: restaurants, retail and recreation

For residents, Main Street is one of the primary places to be in Cedaredge. As COVID-19 restrictions have loosened and businesses are open, the hub of town will become an active place to be a part of the community.

"Cedaredge has an amazing selection of small and locally-owned businesses to tempt anyone out of the COVID-19 blues or boredom blues,"



said Kami Collins, the town clerk and economic development coordinator. "We have a fantastic shopping selection, everything from locally-made art and jewelry to an outstanding antique mall, to unique one-of-a-kind treasures you won't find anywhere else in Delta County."

Cedaredge's diverse businesses extend far beyond Main Street, and wherever residents decide to go in town, they can support local

business and help the town grow.

"You build the kind of community you want with where you spend your dollars. We all have a hand in shaping our communities into vibrant, healthy and engaging places, the kinds of places that turn a town into a hometown," Collins said. "It's up to us, the consumer and the resident, to support the businesses that shape our community by spending locally."



ORCHARD CITY

As you slowly ascend the rolling hillside up to the Grand Mesa, you will pass through Orchard City – a unique agricultural, residential and recreational area nestled between the cities of Delta to the southwest, Cedaredge to the north, and Hotchkiss to the east. Despite being the largest municipality in terms of square miles in Delta County, Orchard City is primarily recognized by the names of three smaller and older areas within its boundaries – Austin, Eckert, and Cory. They all had separate beginnings, but somehow through a unique course of events came together.

Several of the buildings on the highway are constructed using local volcanic rock;



the Eckert Presbyterian Church is over 100 years old and showcases examples of this rockwork. The Eckert Creamery sold butter to the public until the 1980s.

Wander off in either direction from the highway and you will pass through

a countryside that produces a variety of apples, cherries, apricots, pears and peaches. It is also well known for its variety of organic farm produce and livestock including cattle, sheep, elk and buffalo.

Hart's Basin (Fruit Grower's Reservoir) has been a birder's dream come true for many years, and was the first Important Birding Area designated in Colorado. This location is now on the Southwest Colorado Birding Trail. Annually in April, the Sandhill Cranes return here on their northward migration. Thousands of birds take brief sanctuary with the occasional pelican among them.

CRAWFORD

Named after Captain George A. Crawford whose idea to start a post office in this area resulted in the growth of a town—Crawford—which is the high-altitude beauty of the North Fork Valley. Crawford is the gateway to the North Rim of the Black Canyon of the Gunnison National Park which provides numerous outdoor activities such as snowshoeing, snowmobiling and cross-country skiing in the winter and hiking, biking, and photography in the summer.

Located along the West Elk Scenic Byway, the Town of Crawford is nestled in the heart of cattle country between The Black Canyon of the Gunnison National Park and the breathtaking West Elk Wilderness Area. With Crawford's quaint restaurants, outdoor attractions, and unique shops to enjoy, there are plenty of things for the whole family to do.

The North Rim of The Black Canyon of the Gunnison National Park is a won-



derful alternative to the more visited South Rim. This side offers a touch with nature, primitive campsites, and many trails leading down into the 1500-foot deep canyon to the pristine waters of the Gunnison River.

Needle Rock is one of those sites where you ask yourself "what on earth do you call that?" Needle Rock is an intrusive of rhyodacite volcanic plug or volcanic neck that stands 800 feet tall above the

floor of the Smith Fork of the Gunnison River valley. It originated as the throat of a large volcano about 28 million years ago in the Miocee geological epoch, when molten rock intruded between existing sedimentary rocks. It is a breathtaking addition to the view shed in Crawford along the West Elk Loop Scenic Byway.

Visit the Crawford State Park for many other outdoor sports, including hiking, fishing, biking, boating and stand up paddle boarding, just a mile out of the town of Crawford. Another natural resource to be explored is the Gunnison Basin National Forest where the outdoor recreation opportunities are endless.

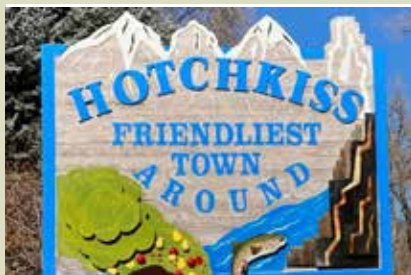
The annual Crawford Pioneer Days festival the second weekend of June each year; enjoy Fireworks over beautiful Crawford State Park, along with a parade, outhouse races, vendors, music in the park, a good old fashioned baking contest, kids events, and so much more!

HOTCHKISS

Hotchkiss is truly one of the friendliest towns on Our Side of the Divide. This little town along the West Elk Loop is named after the man who led the first group of settlers to the area, Enos T. Hotchkiss. Hotchkiss was incorporated in 1900; the town's namesake is an inductee into the Cowboy Hall of Fame.

Hotchkiss is full of charm with downtown bursting with activity and many wonderful dining options, as well as the local favorite Farm Runners specialty grocery store and Blue Sky Baking Co. A can't miss stop includes the Creamery Arts Center with its summer farmers market, as well as the Hotchkiss/Crawford Historical Society Museum.

Hotchkiss is also home to the Delta



County Fairgrounds with over 40 acres of outdoor activities including a beautiful park, a disc golf course, horse shoes, an outdoor riding arena, and a covered riding arena. The Delta County Fairgrounds is home to the Delta County Fair which will be held July 29 - August 6, 2022, and is the showcase event of the summer with 9 days and nights of activi-

ties, and fun for the whole family.

The Fairgrounds also offers Heritage Hall that can be used for corporate events, wedding receptions, birthday parties and other gatherings; it also serves as an indoor pickleball location during the colder months. Maloney House can also be rented out for smaller gatherings and meetings.

The North Fork Recreation District also provides ample opportunity for outdoor fun including a swimming pool, a bike pump track and ball fields.

Visitors can also enjoy the Hotchkiss National Fish Hatchery, Eagle Rock Shelter and, just down the road from Hotchkiss, the Gunnison River Pleasure Park.

PAONIA

The town of Paonia is named for the peony flower. Legend has it that Samuel Wade, who settled the area with William Clark and Enos Hotchkiss, wanted to name the town after one of his favorite flowers, using the Greek spelling Paeonia. Whether the name was misspelled intentionally or by accident, when the town was incorporated in 1902, it was given the name Paonia. Peony plants from the original stock are said to be growing today in Paonia Town Park more than 100 years later.

In addition, the Valley was inhabited by Ute Indians. The only Indians indigenous to Colorado, the Ute history can be traced to early Fremont man who migrated the Bering Strait 10,000 years ago and occupied west-central Colorado. The Utes practiced a universal religion in a natural sanctuary of mountains, rivers and forests. They had a long established social order. The North Fork Valley and Colorado was the ancestral homeland of the Tabeguache or Uncompahgre band of the Ute Tribe. The expedition of Fathers Dominguez and Escalante encamped in the valley in 1776.

Thereafter, the Utes continued to lead their free and nomadic life until the start of the Mexican War in 1846.

A series of treaties with the Utes were approved by the U.S. Senate but were not properly implemented as promised by the government. Disputes arose, culminating in the Meeker Massacre in September, 1879, as well as the Thornburg ambush, leading to a forced exodus of the Tabeguache band of Utes occupying the area to the Uintah reservation in 1881.

Paonia is a unique town, settled by farmers, ranchers and miners, and is now home to artists and outdoor lovers as well. It consistently ranks as one of the "coolest" Colorado mountain towns.

Paonia is naturally air conditioned by warm air flowing up the valley at night and cool air from the mountains during the day resulting in optimal conditions for growing cherries, apricots, grapes, peaches, plums, pears, nectarines and apples. The oldest continuous outdoor community celebration in Colorado is Paonia Cherry Days held over the Fourth of July holiday.

Paonia is a real hotbed of organic farming, sustainably raised meats, value added products, organic hops and a truly remarkable wine industry. You will eat some of the highest quality, cleanest food in the world when you visit this Valley. Just outside town are numerous orchards and vineyards. Paonia sits in the middle of the West Elks American Viticulture Area, a nationally designated wine growing area!

Paonia is a focal point of back roads and trails leading into the forest, attracting hunters, hikers, bicyclists and cross-country skiers. Hunters outfit themselves in Paonia before setting out to get their elk, deer, and bear. Few places offer such a wonderful combination of climate, scenery, lifestyle and recreation.

The art scene is alive and well in Paonia. The North Fork Valley is a "Certified Colorado Creative District," and home to many creatives, including painters, jewelers, dancers, actors, musicians and other artisans. You can enjoy the creativity at places like the Paradise Theatre or Blue Sage Center for the Arts.

Three things to do and see in North Fork

COMPILED BY THE DCI STAFF

Check out the Hotchkiss Fish Hatchery

Located at 8077 Hatchery Road in Hotchkiss, this hatchery was established in 1967 and is part of the U.S. Fish and Wildlife Service's National Fish Hatchery System. At 58 acres, this hatchery is located along the banks of the North Fork of the Gunnison River. The cold, clean water that supplies it is from the Tommy Dowell Spring. The facilities include 24 inside nursery tanks, 40 concrete raceways, and 2 earthen ponds used for effluent treatment and sedimentation.



According to its website, it "has a unique responsibility in helping restore native aquatic populations, mitigate for fisheries lost as a result of federal water projects, provide

fish to benefit Tribes and the National Wildlife Refuges, and to recover species listed under the Endangered Species Act."

At the Hotchkiss Fish Hatchery, visitors can get an up close look at the fish production process. Staff is available to answer questions, and there is a visitor center to explore. There are also educational programs and tours available during business hours. The hatchery also participates in "Outdoor Heritage Days" in Delta by providing fish for the kids fishing derby.

Hatchery hours are 7:30 a.m.

- 4 p.m. Monday - Saturday. Please visit fws.gov/mountain-prairie/fisheries/hotchkiss.php for the latest on COVID precautions. For more information, call 970-872-3170 or email craig_eaton@fws.gov

Head to a local museum and learn about the area's history

The North Fork Valley features an interesting set of museums: the Hotchkiss-Crawford Historical Museum, and the Paonia Museum. In these spots, you can see Indian artifacts, collections of old-time photographs, and many more objects and dis-

A VISIT TO DELTA ISN'T COMPLETE WITHOUT A VISIT TO

CLUBB'S

— 2 Downtown Delta Locations —

5th & Main



Print Shop • Domestics • Housewares • Stationery • Apparel • Health & Beauty Aids • Colorado Gifts • Crafts • Yarn & Needlework • Florals • Homemade Fudge (16 flavors) • Fresh Popcorn Daily

417 Main



Fabrics • Notions • Quilting



970 874-3596 • www.clubbstore.com

Hours: Mon. - Sat. 9 a.m. - 6 p.m. Closed Sunday

The Original Colorado

BIG B'S
DELICIOUS ORCHARDS



COME VISIT OUR ORCHARD STORE, TASTING ROOM, AND CAFE
39126 HIGHWAY 133, HOTCHKISS, CO 81419 • BIGBS.COM • 970-527-1110



An aerial view of the Hotchkiss National Fish Hatchery. Credit: USFWS.

plays. Learning about history is part of the experience, too. The reference library at the Hotchkiss-Crawford Museum has history transcripts, yearbooks, tapes and photo albums. In addition, you can learn more about the history of Colorado at the museum's bookstore. The Paonia Museum, too, offers a look at some historical displays and photographs.

Hotchkiss-Crawford Historical Museum is located at 180 S. Second St. in Hotchkiss, and Paonia Museum is at 700 Shady Lane. Call ahead to schedule a tour: Hotchkiss-Crawford at

970-872-3780; and Paonia at 970-527-3970.

The North Fork outdoors has something for everyone

The North Fork Valley features a variety of public lands that locals and guests alike can visit and enjoy. Paonia State Park and Crawford State Park are a few areas where water sports are one of the more popular attractions. Fish for some Largemouth Bass and Rainbow Trout, or stay on land and go for a hike to explore the backcountry. There's no limit to the trails in this area, and too many to count, so there's plenty of

options on a warm day.

The Hotchkiss National Fish Hatchery is a place to learn how fish are raised and stocked in the rivers of Colorado. In addition, the

Gunnison Gorge National Conservation Area is just a short drive away from the area, and is a great location for hiking, fishing, boating and a look at the scenery.



photo courtesy of Karen Schulman

BERG HARVEST MERCANTILE

73 Samuel Wade Road, Paonia, CO • bergharvest.com
970-527-MERC (6372)

- Great pizza and burgers
- Seasonal organic fruit
- Local craft beer and wine
- Ice cream & shakes
- Freshly baked goods
- Covered deck seating
- Freshly made fudge
- Pet-friendly area
- Clean and safe!



Escape to the historic Bross Hotel Bed & Breakfast and discover the PAONIA CHARM!

Close to wineries, orchards & the Black Canyon of the Gunnison National Park. Walking distance from local restaurants, breweries, shops & galleries. We are now proudly serving Colorado wines by the glass or bottle.

BROSSHOTEL.COM

DELTA

The City of Delta, the namesake and seat of Delta County, was originally set up as a trading post for Ute Indians and the new settlers from the east. Delta is situated where the Uncompahgre and Gunnison Rivers come together.

Delta is also known for its abundance of outdoor recreation opportunities including Devil's Thumb Golf Course rated #1 CAGGY Award for Best Public Golf Course on the Western Slope and Southwest Colorado. And after a round of golf, just down the road you can get your "thrill seeker" on with Ultimate Skydiving Adventures. If you love mountain biking, check out Con-Trail Mountain Biking park located at Confluence Park, which also provides a

great family day of fishing, or a rousing game of disc golf in the Gunnison's Edge Disc Golf Course.

While in Delta, be sure to stop at Fort Uncompahgre, a reconstruction of the original trading post used by traders, trappers and Native Americans. Antoine Robidoux built the original fort in 1828 where it lasted for 18 years. The Delta County Historical Museum, housed in the old firehouse, is a must see for the history buff and the inner science buff in all of us – fossils, dinosaur bones, and a butterfly exhibit which includes some of the only-known specimens of now extinct species are on-hand to quench the learning thirst. Take some time to truly explore the "City of Murals"

which show cases beautiful wall art up and down Main Street, or seek out the many buildings that are on the local and state historic registers. Just down a few miles out of town, discover and hike the newly designated Dominguez / Escalante National Conservation Areas.

If you are into more relaxing activities, take in a movie at the Historic Egyptian Theatre in downtown Delta, or at one of the few remaining drive-ins in the US – The Tru-Vu Drive In Theatre; this blast from the past is a can't miss summer event, and to say that the concession burgers are mouthwatering is an understatement!

Three things to do and see in Delta

Go to the park: Cleland, Confluence, Sweitzer and more

Delta has a number of parks and public outdoor recreation areas that offer activities for residents of all ages. Some parks, such as Sweitzer Lake State Park, are farther from town and allow for things like boating, biking and bird-watching; while others such as Cleland Park are more residential and offer activities such as covered picnic areas, playgrounds and sports areas.

Darin Hamm, City of Delta marketing coordinator, said that a family could easily spend a day or weekend at the city parks and utilize all the amenities they offer.

"There's fishing, hiking, you can do walks on the trail, there's picnic areas and play-

ground areas. ... There's a lot that is available there for people to enjoy," Hamm said. "You could really spend a day there easily on the lake, or you could go by and do several different things."

Delta is also continuously working to add to the parks, including new playground equipment at Cleland Park and the potential for another nine holes of disc golf at Confluence Park. More information on Delta's parks, including information about other nearby recreational opportunities such as Bill Heddles Recreation Center and Fort Uncompahgre, can be found at cityofdelta.net under "Parks and Recreation."

Eat healthy and support locals at farmer's market



Established in 1989, the Delta Farmer's Market offers produce, meats, breads and pies, jams, hydroponics and potted plants, arts and crafts, CBD products, jewelry and more from local vendors. The market has expanded this year to include products that were not offered before and even

more vendors.

"It's just local people getting together and working together," said Tracy Roberts, market coordinator. He also has a honey vendor at the Delta Farmer's Market. "This year, we have probably 50% more vendors than we had last year. We're offering things



this year that we haven't been offering in the past, and it's a wide variety of products. It keeps the money in the community, it goes to Delta County and it's supporting our local people."

In addition to providing for the local economy, Roberts also said that buying local produce and food is often a healthier option.

As harvests come in, more

produce will be available at the market throughout the season. The Delta Farmer's Market is located at Fifth and Meeker streets and will be open from 8 a.m. to noon every Saturday and Wednesday through September.

Delta, the City of Murals

Have you seen the murals around the City of Delta? Twenty 20 murals can be found on the sides of various buildings in Delta. Artwork is from large to small in size and represents the history of Delta and more. Some include: "Ute Country," by Connie Williams; "Gateway to the Canyons," by Richard Doherty and Seth Weber; and

"Anna Dora Opera House" by Richard Doherty.

Along with murals, you can also find a variety of sculptures with many themes. The most famous one is of Antoine Robidoux and the Ute Indians which can be spotted off of Highway 50

(by McDonald's and City Market).

Artwork is created by local artists and is a great way to take in the sites of the City of Delta.



Experience High Altitude Creativity

grand mesa **ARTS** center
high altitude creativity

Grand Mesa Arts & Events Center
195 W. Main Street, Cedaredge, CO | 970-856-9195
www.gmaec.org

Find us on **facebook**

Performing Arts	Visual Arts	Education	Community
Concerts Theatre Cabaret Dance	Curated Gallery Artists Receptions Demonstrations Art Classes	Adults & Children Workshops Lectures Yoga & Movement	Life Celebrations Story Telling Movies Meetings

Upcoming Events

April 15, 2022 ~ Grand Mesa Short Film Festival
Fridays, Beginning May 27, 2022 ~ Live Music Happy Hours
June 11, 2022 ~ ReFind Art Festival
September 11, 2022 ~ Tour de Cedars
November 12, 2022 ~ Deck Your Halls
December 2, 2022 ~ Jingle & Mingle

Visit our website for details, updates & full schedule

NA
ARM
North American
Reciprocal Museum (NARM) Association



24 HOURS IN DELTA COUNTY

Bright and early, start your 24 hours in Delta County with an amazing 18 rounds of golf at Devil's Thumb Golf Course in Delta, where hopefully the resident antelope will join you on throughout the course. For lunch, head to Cedaredge and enjoy a local favorite Lost Mesa Grill, then take a lovely stroll around Cedaredge's downtown scene.

Late afternoon, make your way to Stone Cottage Cellars in Paonia and prepare yourself for the most relaxing stay one can imagine in the Stone Cottage, surrounded by a beautiful garden that's yours for the picking, and of course, enjoy a beautiful selection of wine in the tasting room, derived from the very land from which you are so lucky to be enjoying.

Rio Bravo is a must stop for dinner, with delicious Mexican cuisine! Breakfast brings a quick drive back down to Delta for a rib sticking good old fashioned breakfast at The Stockyards, in Delta. Nothing starts the day off better than a great big plate full of creamy biscuits and gravy, golden hash browns, and sizzling bacon.



4 DAYS IN DELTA COUNTY

By Daniel Roman

Day 1

The Grand Mesa and Cedaredge Towering above the valley floor, at an elevation of 11,332 feet, the world's largest flat-topped mountain rises above the clouds. The town of Cedaredge is situated at its base. For your first day in Delta County, we recommend visiting these two landmarks. Before heading up the Grand Mesa, be sure to stop at Historic Pioneer town for a glimpse of the Old West. Stroll the wooden boardwalk as you tour the town's 24 historic buildings including the Sand Creek School House, Lizard Head Saloon, and a preserved 1881 log cabin. After fueling up at the Lost Mesa Grill on Main Street, Cedaredge, you will be ready for a high alpine adventure on the Grand Mesa. Follow Scenic Byway, Highway 65 up the Mesa for the best view of Delta County, 6,500 feet below. At the Mesa top you will find over 300 lakes surrounded by pine forest. You will see a lot from your car, but many more opportunities await on the Grand Mesa. Consider a hike on Craig Crest Trail, a 5-mile round trip will take you to the Mesa's highest point. Rent a canoe from Grand Mesa Lodge and explore Island Lake, or set up a chair on the shore and cast a line. Mountain bikers will love the Flowing Park Loop at the Mesa's western edge. There are many places to stop for advice and supplies including the Grand Mesa Visitors

Center, and Thunder Mountain Lodge.

Day 2-3

The Gunnison Gorge National Conservation Area is a place of colorful sandstone canyons, ancient archeology, and tranquil waters. The Gunnison River flows clear and cool through the heart of this wonderland, making it one of Delta Counties best natural playgrounds. Native trout, and otters thrive in the Gunnison's gold medal waters, while bald eagles soar overhead. Foxes, and big horned sheep also call these canyons home. The petroglyph inscribed walls of Eagle Rock Shelter, the "oldest house in Colorado" sit prominently at the mouth of Lawhead Gulch, as they have for the past 13,000 years.

For your second day (and night) in Delta County, we recommend an immersive experience in the Gunnison Gorge NCA on a fully outfitted river adventure with Hotchkiss based river outfitter, Western Slope SUP. Here you will paddle and swim by day, stargaze by night, enjoy guided hikes through winding side canyons, and interpret the archaeological sites. You will not need to bring anything on this adventure but your swimsuit, as WSSUP provides everything down to your pillow, including all camping gear, guides who cook delicious meals, and river equipment. The calm nature of the Gunnison River makes it the perfect place for begin-



ners to learn river paddle boarding, kayaking, or to float in a guided raft. Western Slope SUP offers all of these options.

You will meet your guides in the morning of your second day in Delta County. After a 10-minute ride to the river and a little instruction, you will be floating through colorful sandstone canyons. Don't forget to look down at the schools of fish swimming in the crystal-clear water below you! After an hour on the water, you will arrive at the best swim hole on the river. Here, your guides will prepare lunch, while you enjoy a little beach time. In the afternoon there will be an opportunity for a guid-

ed hike, camp games, and of course, relaxing. As the sun sinks behind the red and gold canyon walls, dinner will be served beside the campfire. After dessert, the real show begins as millions of stars come into view like you have never seen them before.

Your third day in Delta County begins with the singing of the canyon wren and the aroma of fresh coffee. After a farm fresh breakfast, you will begin a day of river fun, and archeological adventure. Ride the river about an hour before landing at Eagle Rock Beach. Here you will discover the oldest archaeological site in Colorado: 13,000 year old human habitation, Eagle

Rock Shelter. Your guide will share the exciting history of the site, as well as interpret its petroglyphs, and artifacts. You will have an opportunity to take a short nature hike up Lawhead Gulch, to see how the inhabitants of Eagle Rock Shelter lived. Lunch will be served back at the beach. After lunch You will float the final stretch of the Gunnison Gorge NCA, reach the take-out point around 2:00 pm, and take a 20-minute van ride back to Hotchkiss.

Day 4

Paonia Wine Country Paonia, Colorado and its surrounding countryside is home to 10 award winning wineries, including the highest elevation Cabernet Sauvignon vines in the country. These wineries dot across the rural landscape from the banks of the North Fork River, to the mesa tops. The best way to visit the tasting rooms is by E-bike. Fortunately, SK bikes in Paonia has E-bikes available for rent. Park your car in their downtown location, and enjoy the wind in your hair as you pedal out to Orchard Valley Farms, where you can enjoy a glass of Pinot beside the river. The

farm also features a you-pick peach orchard, and a well-stocked market. From there, you can test your peddling skills as you climb Garvin Mesa, or let the bike's electric motor do the work. Here you will find Stone Cottage Cellar and their famous high-altitude vineyard. Further along, you will come to Azura Cellars. Azura is situated on the Mesa's edge, overlooking the town of Paonia, and the imposing West Elk peaks of Mt. Lamborn and Landsend. Their patio is the best place to take in a Paonia sunset.

Alternatively, consider a guided van tour from Colorado Detours. Choose any of the 10 wineries to visit, and your hosts, Dave and Jo Ann will customize the itinerary. You will learn plenty of fun facts about the area from natural history to organic agriculture. Be sure to ask them for a stop at Big B's for a complete local market, you-pick orchard, cider tasting, and of course, the rope swings.

Cap off your day in Paonia with a visit to the Flying Fork Café. Here you can sample dishes made with fresh local ingredients from the farms



— 100 THINGS TO DO

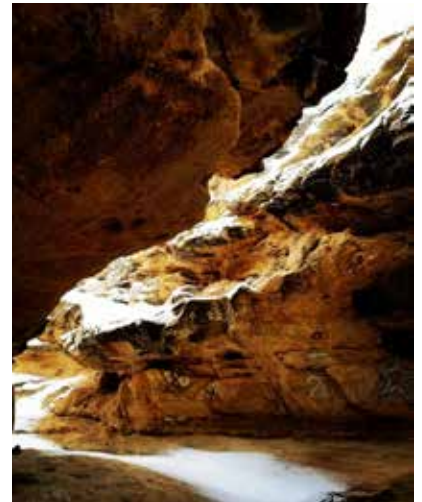
1. Walk through an [Art Walk](#) in Cedaredge.
2. Explore the North Rim of the [Black Canyon of the Gunnison National Park](#).
3. Explore the [Byway on the Grand Mesa](#) (Hwy 65).
4. Indulge in international cuisine.
5. Step back in time at [Fort Uncompahgre](#) with a fur trader.
6. See animals like those that star in western movies at [High Wire Elk and Bison Ranch](#).
7. Perfect that golf swing with a gorgeous view.
8. Catch live music.
9. Pick your own cherries and make a pie.
10. Learn how to make your own beer.
11. Learn about a new culture at a museum, gallery, or art show.
12. Hike the [Crag Crest Trail](#).
13. Drive the [West Elk Loop Byway](#).
14. Raise a glass on the patio at a local winery.
15. Watch a live performance at a local brewery.
16. Find a butterfly in your favorite color at the [Delta County Museum](#).
17. Try pickle ball; check out the courses.
18. See a show at the [Blue Sage](#).
19. Make all your friends jealous by learning Stand up Paddle Boarding.
20. Bike the [Smith Mountain Loop](#).



21. LOL at a movie in Delta or Paonia.
22. Bust a yoga move with goats.
23. Relive the adventure of heritage travelers at [Pioneer Town](#).
24. Learn why Colorado has more than beer: Tour a winery.
25. Catch your own dinner on the Gunnison River.
26. Visit a local orchard.
27. Launch your inflatable kayak at [Confluence Park](#) put in.
28. Camp in a Tipi at [Fort Uncompahgre](#).
29. Count the lakes at [Land O' Lakes Overlook](#).
30. Bike the [Escalante Rim Road](#).
31. Buy a book from a local author and read it somewhere outdoors.
32. Take a fly fishing lesson.
33. Watch for flora and fauna along the [Dominguez/Escalante Rim Loop](#).
34. Savor a classic local summer treat - Cherry Pie.
35. Go back in time at [Pioneer Town](#) with the Adobe Museum.
36. Visit a local roadside produce stand.
37. Look for leaves changing on [Grand Mesa](#).
38. Shop in Town, not yours, the next one over.
39. Drive thru Crawford and discover all of the unique geology.
40. Float the Gunnison River and see the

ancient [Eagle Rock Shelter](#).

41. Visit a Farmers Market.
42. Pull a skier behind your boat at one of our State Parks.
43. Find a crocodile fossil imprint (BLM can help).
44. Take a guided tour.
45. Follow the [Old Spanish Trail](#).
46. Try some locally made goat cheese.
47. Raft the mighty Gunnison River.
48. Eat an ice cream cone; let it drip on your chin.
49. Play a round of 18-hole golf.



50. Take a 2nd Saturday Stroll in Delta.
51. Order a dinner and go star gazing on the North Rim of the [Black Canyon of the Gunnison National Park](#).
52. Get a healthy tonic or salad.
53. Pick mushrooms on Grand Mesa.
54. Get an E-Bike and go wine tasting.
55. Pick your own fruit at [a local U-Pick](#).
56. Look for Rock Art in [Escalante Canyon](#).
57. Grab your binos and find 200 bird species at [Fruitgrowers Reservoir](#).
58. Polish up your photography skills in Escalante Canyon.



IN DELTA COUNTY —



- 59. Drop a line in the [Gold Medal waters](#) of the Gunnison River.
- 60. Challenge yourself to a round of disc golf or putt putt.
- 61. Find yourself at a local concert.
- 62. Take a pottery class.
- 63. Book a tour with [Yaks Matter Ranch](#) in Crawford.
- 64. Find your favorite food in each of our six towns.
- 65. [Fly over the Grand Mesa.](#)
- 66. Walk your dog on the [Land O' Lakes trail](#).
- 67. Get a hole in one at a mini golf course.



- 68. Peddle around on the [Jumbo Mtn. Trails](#).
- 69. Enjoy a show at the [Drive-in Theater in Delta](#).
- 70. Attend an artist reception.
- 71. Ride an ATV on a Grand Mesa trail.
- 72. Learn about Antoine Rubidoux at [Fort Uncompahgre](#).
- 73. Take an art class at any of our art centers.

- 74. Try a winemakers and pairing and tour.
- 75. Stroll through Delta and photograph the murals.
- 76. Take the [farm tour](#).
- 77. [Jump out of a perfectly good airplane.](#)
- 78. Find a fossil at the [Delta County Museum](#).
- 79. Ride a horse from Crawford to Aspen.
- 80. Take a selfie with [Needle Rock](#) in Crawford.
- 81. Try the Polish Sausage at [Alexander Lake Lodge](#).
- 82. Camp in a tipi.
- 83. Grab a vintage treasure at [4th and Main in Delta](#).
- 84. Get the "best burger" in Delta County.
- 85. Target practice at [Stengel's shooting range](#).
- 86. Get your salad goodies at [Farm Runners](#).
- 87. Stalk an elk in the [West Elks Wilderness area](#).
- 88. Take yourself to a [Pickin' in the Park](#) free concert.
- 89. Enjoy the [outdoor pool in Hotchkiss](#) or the [indoor pool in Delta](#).
- 90. [Climb 5,500 feet to the top Lamborn](#) for a view you will never forget.
- 91. Get some fresh baked bread.
- 92. [Eat paella](#) and plan bocce ball.
- 93. Hike to the [Eagle Rock Shelter](#).
- 94. Pick a peach and let the juice run down your chin.
- 95. Try a flight of brews.
- 96. Ride your bike through blooms in the orchards.
- 97. Learn about the [stacked silos in Cedaredge](#).
- 98. Take a stroll on one of our story walks.



- 99. Buy something made locally as a gift for a friend.
- 100. Stand at the [Black Canyon](#) and be Inspired to linger.





Bring your sticks to Delta County for challenges at Cedaredge Golf Club or Devil's Thumb Golf Course

BY WAYNE CRICK
DELTA COUNTY INDEPENDENT

Golfing in Delta County has been popular for many years with Delta having the distinction of owning the county's longest tenured town having a golf course. Cottonwood Golf Course served Delta County golfers until 2001. In 1992, the DeerCreek Village Golf Club was built and later changed its name to Cedaredge Golf Club in 2010. With the building of Devil's Thumb Course, Delta County now offers two choices for local and visiting golf enthusiasts from all over the region. Each course has unique features that draws golfers to the individual community that individual course members call home.

Devil's Thumb
Golf Course -
devilsthumbgolfcourse.net

Located in the foothills north of Delta, Devil's Thumb architect Rick Phelps carved

what has been referred to as a "hidden jewel" in the desert. Phelps called his creation a "prairie style" course that is surrounded by adobe hills with sparse vegetation. The course sits above the town of Delta with Grand Mesa to the north, the San Juan Mountains and Uncompahgre Plateau to the southwest, and the West Elk Mountains and Black Canyon to the south and southeast.

In the middle of the adobe lies an 18-hole golf course that plays to 7,176 yards from the tips (Black Tees) and 5,180 yards from the front (Green Tees). The five sets of tees afford a challenge for every level and type of golfer. Elevated tee shots from numbers three, four on the front nine, and numbers 13 and 14 on the back nine, will test your perception and club selection, especially when wind adds to the challenge.

There are over 50 bunkers of various sizes and shapes to put tee and fairway shots in

jeopardy if the proper decisions aren't made prior to your swing. The greens are well manicured and fast with varying elevations on several holes. Fairways are wide enough to accommodate golfers of most experience levels.

The real beauty of Devil's Thumb is the ability to play its links year round with mild temperatures gracing the area during winter months. Hours

The real beauty of Devil's Thumb is the ability to play its links year round with mild temperatures gracing the area during winter months.

of operation for November through February are 10:30 a.m. - 1:30 p.m. for tee times

and 10 a.m. - 4:30 p.m. for the pro shop; March and October, 9:30 a.m. - 4 p.m. for tee times and 8 a.m. - 6 p.m. for pro shop; April and September 8 a.m. - 5 p.m. for tee times and 7:30 a.m. - 6 p.m. for pro shop; and May through August, 7:30 a.m. - 6 p.m. (Sunday through Thursday), 7 a.m. - 6 a.m. (Friday and Saturday) and 6:30 a.m. - 8 p.m. for pro shop. The ability to play year round, and the superlative condition of Devil's Thumb Golf Club, helped the course win the prestigious Caggy Award, sponsored by Avid Golfer. Devil's Thumb was voted, for the first time in its existence, No. 1 on the Western Slope of Colorado and in Southwestern Colorado.

As with most golf clubs and courses, Devil's Thumb offers varying rates throughout the year with great daily specials to accommodate walking and riding linksters who play the course. Devil's Thumb is a premier course that offers the lowest prices in the area for

the best value in the region. Tee times may be booked in advance. For more information about Devil's Thumb, or to book your tee time, call 970-874-6262.

Devil's Thumb offers full menu items such as hamburgers, hot dogs, fries, wraps and assorted snacks with a bar menu that provides beer, soft drinks and tea. No outside alcoholic beverages will be allowed per city ordinance directive.

Come play a truly intriguing and delightful golf course. You'll want to come back and play again!

Cedaredge Golf Club - cedaredgegolf.com

Cedaredge Golf Club is located in the southern foothills of Colorado's Grand Mesa in Cedaredge. Built in 1992, the course was designed by Byron Coker and is a magnificent combination of elevated tees with challenging hole layouts and spectacular scenery. With an elevation of nearly 6,200 feet, the course has plenty of

trees and water to add to the challenge of playing. There are four sets of tees to accommodate golfers of varying abilities and test the skills of even the most accomplished players. There are two distinct nine-hole venues with the front winding through residential housing and a more flattened geography while the back nine plays in a mountainous terrain with several elevated tees and more narrow fairways. A bonus for the back nine is the vistas to the south of the course offering views from Mount Lamborn to the east and the Uncompahgre Plateau to the west.

- The course is closed in December and January and on Thanksgiving Day. All other months are playable depending on extreme weather occurrences.

2022 green fees and cart fees

9 Holes

- \$20/\$30 with cart
- Twilight, after 3 p.m. -

- \$10/\$20 with cart
- Senior (62+)/military (Monday-Thursday) - \$25 and includes cart
- \$12 cart fee
- \$9 club rentals
- \$5 driving range (large bucket)

18 Holes

- \$30/\$55 with cart
- After 10:30 a.m. - \$25/\$45 with cart
- After 1 p.m. - \$20/\$35 with cart
- Twilight, after 3 p.m. - \$10/\$20 with cart
- Senior (62+)/military - \$39

- and includes cart
- \$20 cart fee
- \$15 club rentals
- 10-play punch cards**
- \$165 (9 holes)/\$285 (18 holes)
- \$100 (9-hole cart fee)/\$160 (18-hole cart fee)
- Contact the clubhouse at 970-856-7781
- No alcoholic beverages



970.250.3817
www.thecabinsofgrandmesa.com



Open Year-round • 5 Historic Cabins • 9 acres • Creek
Private Firepits, hammocks & grills • Family Reunions
Micro Weddings • Retreats • Relaxation

These early 1900's cabins have been lovingly restored to assure a cozy stay. Each cabin is equipped with a kitchen, bathroom, fireplace, cookware & more. Centrally located off of the Scenic Byway just 5 min north of the town of Cedaredge and 15 min from the Visitor's center on the Grand Mesa. Whether your plans include: golfing, wine tastings, fishing, hiking, atv riding, etc all are within 5-15min of our location. Spend the day exploring and spend the evening gazing at the stars.



23231 U Road, Cedaredge, CO 81413
970-250-3817
Visit us at: www.thecabinsofgrandmesa.com for more info



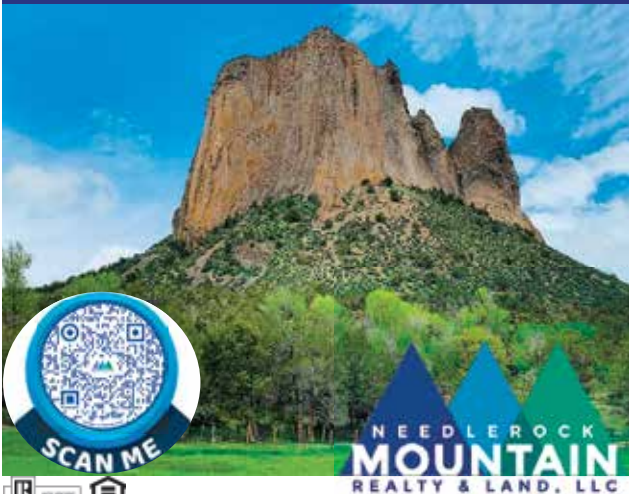




The historic Midway red barn. Courtesy photo/Kris Stewart



Exceptional Service * Local Experts



Paonia: 236 Grand Ave
970-527-5331

Crawford: 380 Hwy 92
970-921-5331

www.NeedlerockRealty.com

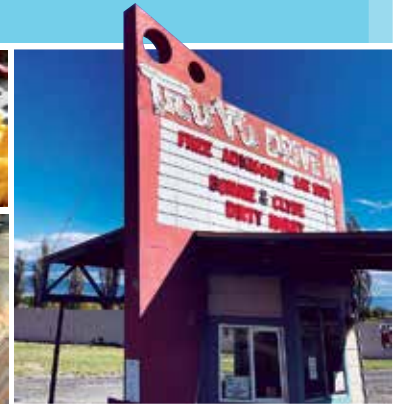
Helping Buyers and Sellers in
Western Colorado for over 30 years

DELTA | **FIERCELY**
COLORADO™ | 81416

Delta

COLORADO

Take a step back in time and experience pure Americana in Delta, Colorado. From the oldest continually operated family business in Colorado to our Tru-Vu Drive In, visiting Delta is like stepping into the past. Surrounded by over 600,000 acres of public land, you will find something for everyone in the City of Delta and the neighboring areas.



#FIERCELYCO VISITDELTA.CO.US



Portions of the sprawling Dominguez-Escalante National Conservation Area are accessible by car, but 66,000 acres are set aside as road-less wilderness. Don Benjamin/DCI

DOMINGUEZ-ESCALANTE:

Explore an unparalleled treasure

BY DON BENJAMIN
DELTA COUNTY INDEPENDENT

The best way to approach the huge site known as Dominguez-Escalante is to think of it as two distinct entities. Part of the sprawl-

ing area is accessible by car, the other is a large road-free wilderness which can only be reached by floating the Gunnison River or embarking on trails to hike, ride horseback or bike through

breathtaking vistas.

The all-encompassing Dominguez-Escalante National Conservation Area and the area's interior portion known as the Dominguez Canyon Wilderness are managed by the Bureau of Land Management (BLM). The conservation area encompasses 209,610 acres (about 327 square miles) including the 66,000-acre wilderness which is one of the state's largest road-free regions. The area stretches across three Western Colorado counties, with a sizable share of the

most accessible acreage falling in Delta County.

In 1776, two Franciscan priests — Fathers Dominguez and Escalante — set out to explore New Mexico, Colorado, Utah and Arizona. Although their route did not include the sites that would eventually bear their names, their detailed journal describes topography similar to that included in the present-day conservation area: semi-arid land, large and small rivers, colorful vistas and deep canyons.

Keep in mind that the place



Ancient petro-glyphs grace walls and boulders in Dominguez-Escalante. Don Benjamin/DCI

is huge, about a third the size of Rhode Island. Given its size, a map is an essential resource. Visitors can obtain an area brochure which includes a map at the Delta Area Chamber of Commerce at 301 Main St., or at Fort Uncompahgre in Delta's Confluence Park at 440 N. Palmer St. At the Fort, be sure to ask for the newest Dominguez-Escalante Travel Map.

First-time visitors can access a scenic portion of the area by car. Highway 50 connects Delta and Grand Junction. The Escalante Canyon Road is on the west side of Highway 50 between mile markers 59-60. Barring heavy rain or snow the dirt road is passable year-round with a passenger car, but a four-wheel drive is recommended beyond the first 17 miles where the roadway reaches Escalante Forks. Although the road passes through several miles of private property which are not accessible for hiking, there are viewpoints all along the road including historic cabins, spectacular red rocks, and occasional herds of mountain sheep. And the Potholes Recreation Site area (12 miles in) offers camping, picnicking, hiking and seasonal swimming with the precautions of wearing a life jacket and refraining from diving into a watery cauldron which has claimed at least eight lives.

With a map in hand, a hike through Big Dominguez Canyon will give visitors an intimate sense of the place. The full journey is over 16 miles one way and requires a full day to hike in and back out again, but explorers can shorten the dis-



Mountain sheep inhabit portions of the Dominguez-Escalante area. Don Benjamin/DCI

tance as they wish and still encounter spectacular scenery along with ancient petroglyphs. Start at the Bridgeport Trailhead which can be reached by taking Bridgeport Road on the west side of Highway 50 near mile marker 52.

The newly-designed Escalante Triangle Mountain Bike Trail System can be accessed from Delta by traveling west on West Fifth Street which becomes G Road. Take the fork to Sawmill Mesa Road which leads to Escalante Rim Road. A more detailed map can be obtained online by searching for "Escalante Triangle Mountain Bike Trail System."

Rivers of the Dominguez-Escalante area are prized by white water kayakers as well as those who paddle canoes and rafts. Search the internet for tips using the "lower Gunnison River" as a search term in tandem with "canoeing" or "floating."

The Cactus Park region on

the northwestern edge of the conservation area includes roads for motorized recreation along with horseback riding, mountain biking, and

traditional hiking. Portions of Escalante Canyon Road are also open to all-terrain vehicles and motorcycles.

All Natural Farmstead Fresh



Rocking W
Cheese & Milk



5644 Hwy 348
Olathe, Colorado 81425
Phone: 970-323-5994
Email: sales@rockingwcheese.com
Website: www.rockingwcheese.com

Store Hours:
Monday thru Friday 9-5
Saturday 9-4
Sunday Closed



Ice Cream, Coffee, Affogato's
Jams, Syrups, Sausage, Jerky





Senior hikers on the West Bench Trail in Oct 2020. Photo by Donna Iovanni

A Network of Trails for Every Traveler



The 22-mile Sidewinder Trail is one of Colorado's must-do trails for experienced mountain bikers. Delta County Fresh/Kristina Kittelson

BY DON BENJAMIN,
CONTRIBUTING WRITER

Whether setting out on foot or mounting a trusty steed—mechanical or otherwise—Delta County overflows with inspiring vistas and meandering trails. An aerial view of the 1,150 square mile county would reveal a network of routes ranging from easy pathways for family outings to vigorous challenges for dedicated enthusiasts.

Since no single newsprint map can do justice to the entire picture, the purpose of this article is to point folks in the direction of outlets were

activity- and location-specific brochures and maps can be obtained.

Go to One-Stop Shops: Two spots in Delta City carry lots of area maps and brochures which point the way to trail adventures. Visit the Delta Area Chamber of Commerce at 301-Main St, phone 970-874-8616, hours are Mon-Fri, 9 a.m. to 5 p.m. Or stop by Fort Uncompahgre at 440-N. Palmer St, phone 970-874-8349, hours are Mon-Sat, 9 a.m. to 4 p.m.

Go Online: A great place to start online is the website: del-

A NETWORK OF TRAILS, CONT.

tacountycolorado.com. Select "Play" from the top menu, then choose "Brochures & Maps" to select from a variety of offerings. The Delta County site also has a special section for bike riders. Select "See & Do" from the top menu, then choose "Activities," then "Biking."

By activity or region, other online sources for maps and brochures are:

Biking County-wide:

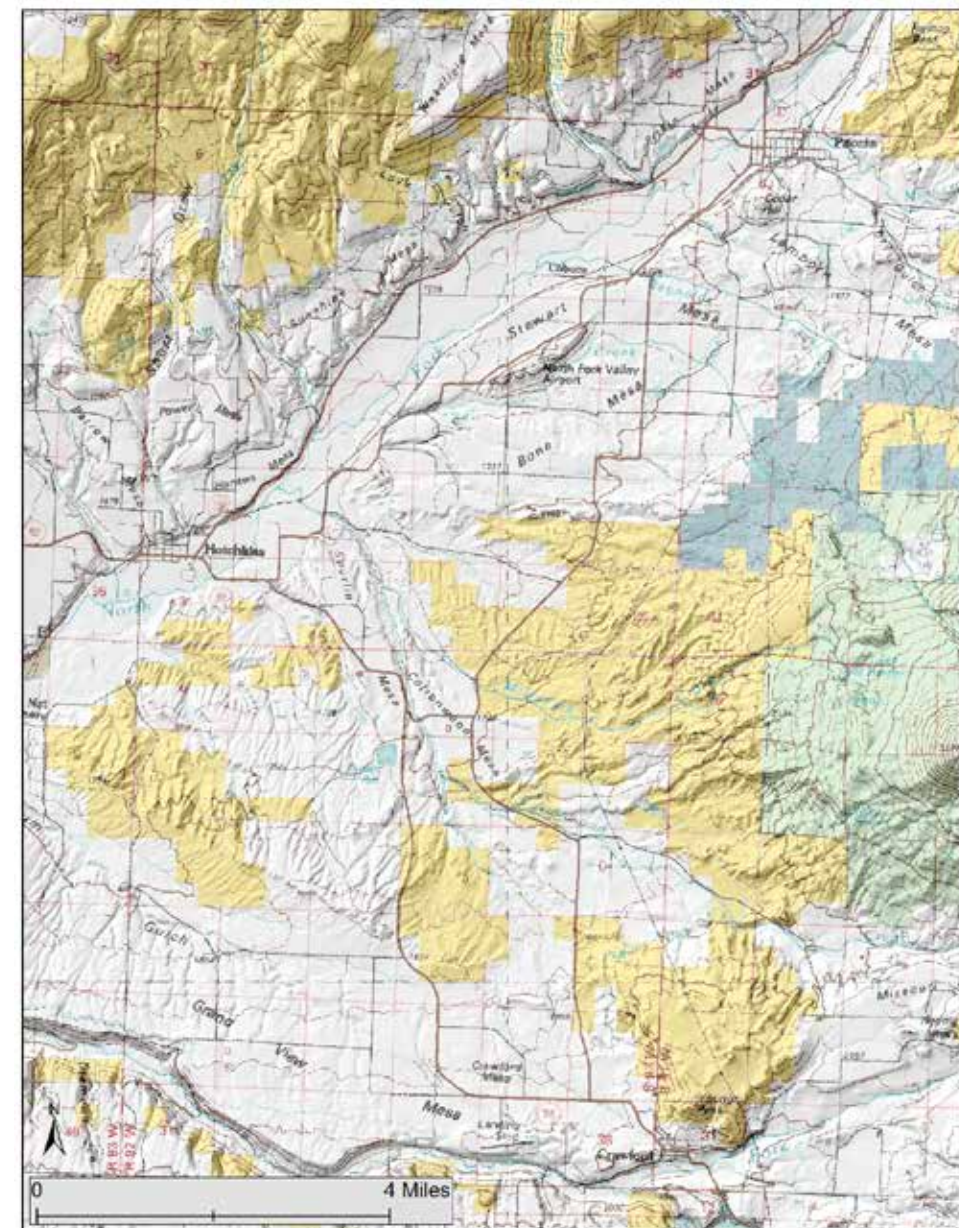
Visit the Colorado Plateau Mountain Bike Trail Association at copmoba.org. Select the Delta Area Mountain Bikers (DAMB) link.

Hiking Grand Mesa: In season (May-Sep) drop by the Grand Mesa Visitor Center at the intersection of Hwy 65 and Forest Service Road 121 (Baron Lake Dr). Call (970) 856-4153 for hours. Also visit alltrails.com and type in "Grand Mesa" to link to descriptions and maps for multiple trails on Grand Mesa.

Grand Mesa, Uncompahgre and Gunnison National

(GMUG) Forests: At press-time the lobby of the Delta-based GMUG Supervisor's Office at 2250-S. Main St. was closed to the public. However, those needing maps, brochures and various permits can still call 970-874-6600 for assistance. Hours are Mon-Fri, 8 a.m. to 4 p.m.

Exploring Dominguez-Escalante and Gunnison Gorge National Conservation and



Wilderness Areas: Go to the Bureau of Land Management website at blm.gov. Select "Programs" from the top menu, then "National Conservation Lands," then "Colorado" and click on "National Conservation Areas" and/or "Wilderness." Once you reach a specific site, you'll find links to brochures, maps and other resources.

Play Areas for Off-Highway Vehicles: Cross-country motorcycles, All-Terrain

Vehicles (ATVs) and mountain bikes have a place to play in Delta County. The Flat Top – Peach Valley Recreation Area has been set aside for motorized activities. A brochure with directions to the site and regulations is a must. Obtain brochures at Fort Uncompahgre (see "One-Stop Shops" above) or type "BLM Flat Top Peach Valley" in an internet search engine. The BLM website at blm.gov also has an interactive map.

Choose "Visit" from the top menu, then click on "Off-Highway Vehicles." OHV registrations can be renewed at Sweitzer Lake State Park, southeast of Delta at 1735-E Rd, phone 970-874-4258 for information.

Horseback Riding: Maps and brochures describing foot trails designate where horses may go and most improved trails have signage indicating what modes of travel are allowed.

Tongue Creek Ranch

Vacation Rentals, Stables, Weddings and More



We have 5 Airbnb/VRBO Rental Units on Site

Wedding/Event Venue

3 Affordable Wedding Packages Available

Horse Stables for Rent



TongueCreekRanch.com

Call Barb at 303-601-4153 or David at 720-284-4367

We are Pet-friendly, offering the best lodging and hospitality services in town thanks to our privileged location across beautiful scenic views and trails along the Gunnison River.



PREMIER DOUBLE QUEEN SUITE • DELUXE KING SUITE • SIGNATURE QUEEN SUITE



AC/ heating, Wi-Fi, full bathroom, enclosed patios and more!

We are sitting on 400 acres with multiple lakes on both sides of the majestic Gunnison River in the center of Delta Colorado. An amazing hidden gem ideal for your rafting adventure or fishing trip.

This truly is the best basecamp of the Western Slope!



677 US-50, Delta, CO 81416

info@riverwoodinnndelta.com

(970) 874 5787



The Grand Mesa Visitor Center. Forest Service photo w

For Excellence in Real Estate Services Give Me a Call When You're Thinking of Making a Move!



Marsha Bryan, Broker/Owner

RE/MAX Hall of Fame

CIPS, CRS, ABR, RSPS, TRC, SRES, SRS

970-856-8000

marshabryan1@gmail.com



975 S. Grand Mesa Dr., Cedaredge, CO 81413

Each office independently owned & operated

WITH 3 WESTERN COLORADO LOCATIONS TO SERVEYOU!

Carbondale • Cedaredge • Paonia



Delta's Tru-Vu Drive-in is one of only eight functioning drive-in movies still operating in Colorado. mydeltamovies photo

Drive-in movies remain a Western Slope tradition

BY DON BENJAMIN
DELTA COUNTY INDEPENDENT

At last count, only eight drive-in theaters were still operating in Colorado. Two of these vanishing icons remain active on the Western Slope: The Star Drive-in in Montrose and Delta's Tru-Vu Drive-in Theatre. The Tru-Vu is located at 1001 Hwy 92 in Delta.

Having weathered the challenges of a global pandemic, the Tru-Vu continues to provide viewers with the comforting nostalgia of an outdoor big-screen cinematic experience. For drive-in movie enthusiasts there's nothing like the thrill of piling into the car after supper, arriving at the showgrounds at dusk and watching the sun-

set while munching popcorn.

As restrictions ease, moviegoers will see a return to the "backyard" atmosphere that typifies rural drive-in movies. Whether sitting inside a traditional vehicle, or perching on straw bales in the bed of a pick-up truck, or lounging in camp chairs, patrons will find ways to relax and enjoy the show.

Features at the Tru-Vu Drive-in are complemented by shows at a downtown companion venue. Located at 452 Main St, the Egyptian Theatre is Delta's traditional movie house. For hardy superfans, a Friday dinner downtown followed by an evening at the Egyptian is often paired with a Saturday night jaunt to the drive-in.



The historic Egyptian Theatre in downtown Delta is a traditional venue which complements the city's nostalgic drive-in. Wikipedia photo

Like other drive-ins nationwide, the Delta site has diversified its offerings. In addition to showing regular movies, the Tru-Vu has presented virtual music concerts, especially those featuring country stars. Stay tuned for more of the same.

Check out the website mydeltamovies.com for upcoming features and up-to-date viewing guides. For current information call the Tru-Vu information line at 970-874-9556; or the Egyptian information line at 970-874-9770.

Four fun winter activities on Grand Mesa

1. SKIING AND SNOWBOARDING AT POWDERHORN

Powderhorn averages 250 inches of dry powder every winter.

Powderhorn Mountain Resort, perched on the northern edge of Grand Mesa, is a family-friendly ski and snowboard area with affordable prices, 1,600 acres of diverse terrain, 42 trails, two terrain parks, an average of 250 inches of dry Colorado powder every winter—and no crowds. The area, with 20 percent beginner and 50 percent intermediate runs, is perfect for families and novice skiers, while advanced skiers and boarders love Powderhorn's steep runs, moguls, and glade skiing through groves of white-trunked aspens. Besides great skiing, Powderhorn is renowned for its stunning views across the Roan Plateau and Book Cliffs below Grand Mesa. There's lodging at the mountain base and food and drink at the Sunset Bar & Grill.

2. COLORADO'S BEST CROSS-COUNTRY SKIING

Grand Mesa in northern Delta County simply offers the finest cross-country skiing in Colorado. Deep snow blankets the 10,000-foot-high mesa, called the biggest flat-topped mountain in the world, from November through April. Grand Mesa Nordic Council maintains and grooms 32 miles of ski trails in three different trail systems—Ward, County Line, and Skyway. The trails offer both skate and classic Nordic ski-

ing on either flat or undulating terrain, making it perfect for cross-country winter adventures. Warming huts are near the trailheads. The council also maintains more trailheads on the Mesa for backcountry skiing on ungroomed terrain. Get lessons and ski rentals at Mesa Lakes Resort.

3. SNOWMOBILING IN THE DEEP SNOW

Delta County is western Colorado's snowy playground for snowmobiling. More than 400 inches of powdery snow blankets Grand Mesa every winter, and a dedicated system of snowmobile trails—plus plenty of room for off-trail riding—give you lots of opportunities to take advantage of it all. The trail system includes Land's End Loop, Bonham, Bull Creek, Cold Sore, and Vega trails, along with the longest snowmobile trail in the lower 48 states. The 123-mile Sunlight to Powderhorn Trail, running between Sunlight Ski Area near Glenwood Springs to Powderhorn Mountain Resort on Grand Mesa, is one of the state's best rides. Trails are marked with orange flags, with some also used by cross-country skiers. Remember to share the trail. Snowmobile rentals, tours, and lodging are available at Thunder Mountain Lodge, Grand Mesa Lodge or Alexander Lake Lodge with Grand Mesa Adventures. Other snowmobile trails are in the North Fork Valley near Paonia.



4. SNOWSHOE ADVENTURES ON GRAND MESA

The broad top of Grand Mesa yields some of Colorado's best snowshoeing adventures, especially for beginners and families with its gentle terrain. The Mesa is also big enough to find solitude and silence in the winter woods away from cross-country skiers, snowmobilers, and ice fishermen. It's best to avoid the groomed X-C trails and instead head into the deep woods and snow-covered meadows where you can snowshoe almost anywhere. A designated two-kilometer snowshoe trail is part of the Nordic Coalition's Skyway Trail System. Other great snowshoeing trails are the Griffith Lakes Trail, Crag Crest Trail, West Bench Trail, and Mesa Lakes Loops. One of the best treks is the 3.5-mile Ward Trail which climbs almost 1,000 feet from the south trailhead on highway 65. Snowshoe rentals and guided tours are available at lodges atop Grand Mesa.

ROGERS MESA STORE

**DELI
GIFTS
PROPANE**

POUR FARM CERAMICS

32345 Hwy. 92 • Hotchkiss
therogersmesastore.com
872-4816

- Gifts & Souvenirs
- Convenience Store
- Diesel, Regular, Mid Grade (87), Premium
- Fleet Credit Cards
- Basic Livestock Feed
- Paint Your Own Ceramics
- Overnight Camping

Open 7 Days a Week

Ranches, Residential and Commercial

NEEDLEROCK MOUNTAIN REALTY & LAND, LLC

Karri McLeod 970.640.8022
karri.reealty@gmail.com

Custer McLeod 970.209.0696
custer.reealty@gmail.com

Broker Associates
380 Hwy 92 Crawford, Co. 81415
970.921.5331

Fun and fish

IN THE DELTA REGION

Flowing deep within the Black Canyon, the Gunnison River is not the easiest to get to, but for those who can make the hike, both the scenic and the fishing reward are outstanding. One of several Gunnison Gorge trails, the Ute Park trail is close to Delta. Special to Delta County Independent/Joel Evans

BY JOEL L. EVANS
SPECIAL TO DELTA COUNTY
INDEPENDENT

Looking to chase a fish? Visitors and residents alike can find water most any direction from Delta. Being Colorado, numerous lakes and rivers shout, "Fishing is fun!" Follow me on a quick tour of prime destination fishing spots within an easy day trip of Delta.

Confluence Lake - Confluence Lake is a quiet park and picnic area on the western side of downtown Delta. Since its opening in the early 1990s, this city park has seen multiple improvements over the years, with much to do besides fishing. The point here is that this is a great place to take kids for fishing without driving very far. Given the short attention span of kids, if they tire quickly, then the time to get back home is minimal. Or they can find multiple other activities in the area such as playgrounds, the Fort

Uncompahgre Museum, ball fields, and if nothing else, skipping rocks on the lake or watching the ducks.

Kids will do best with spinning gear. Adults can hook a trout themselves either with spin gear or fly gear. Not to be ignored are the large carp in the lake, a challenge to even the experienced fisherman. Not for kids, but at low-flow season, adults can access the Gunnison and Uncompahgre Rivers, which join here.

Sweitzer Lake - Just a short distance south of Delta is Sweitzer Lake, a Colorado Parks and Wildlife State Park. Considered primarily a boating and recreational lake, Sweitzer offers fishing for warm water species such as bluegill, catfish and carp. Another place for the kids to fish and play for a day.

Grand Mesa National Forest - A beautiful setting of endless fishing opportunity. Numerous lakes, some nat-



Designated by the Colorado Parks and Wildlife as a Gold Medal stream, the Gunnison River isn't by any means the only place to fish in the Delta area, but it does occasionally reveal some beautiful rainbow trout. Special to Delta County Independent/Joel Evans

ural, but most actually are a reservoir, the lakes generally fall into one of two fishing categories. Either they are easily accessed as they are close to the main road, in which case they are heavily stocked with catchable trout. Or they are down an unimproved road or require a hike, in which case they see fewer fishermen which increases

the chances of a trophy fish.

While rainbow trout are the primary catch, other trout such as brown, brook and cutthroat are scattered throughout the Grand Mesa. Some lakes are managed for specific species, such as grayling, splake and tiger trout, and may have special limited or no-kill regulations.

Cutthroat trout are the only native trout to Colorado, but today exist only in limited waters. The small creeks of the Grand Mesa harbor cutthroats. These creeks are very small and may only flow a short distance from one reservoir to the next.

The Colorado Parks and Wildlife has published a locally available book about fishing on the Grand Mesa. Not so much a fishing guide book, it is more of a reference book that gives a brief synopsis of the many waters, listing the lake size and depth, how to access the lake by vehicle or trail, and what kinds of fish to expect in that water.

Gunnison River – The best river fishing the area has to offer and even nationally famous for good reason, the Gunnison boasts one of the highest counts of fish per mile in the entire nation. Big rainbows and abundant brown trout rarely mean a slow day. Public water extends its entire length from east of Delta at the confluence of the North Fork of the Gunnison and the main stem of the Gunnison, which travels all the way from Blue Mesa Dam east of Montrose. Along that journey, the river courses through the Black Canyon of the Gunnison National Park and the Gunnison Gorge National Conservation and Wilderness Area. The most secluded section of the river lies within the National Park. Available only by foot and only to the strongest of heart, the river in the deep canyon is beautiful and bountiful with fish.

One can drive to the river in only a few places. The closest to Delta is the confluence, where one can park at

the river. Except for times of high flows, the public water is upstream from the confluence for miles for those willing to walk and wade.

For the hearty hiker, the Gunnison Gorge is accessed by dirt roads off of the highway south of Delta, near Olathe. These sometimes rough roads wind and lead upward to the distant canyon rim. At the rim, one parks the vehicle, grabs a carefully thought-out backpack, to descend steep foot trails down into the canyon. Hikes of 30 minutes to an hour or more lead to wade fishing in wonderful pool and pocket water. Chukar Trail, the shortest and most popular of four designated trails, is the access point for private and commercial rafting. Inquire locally about trail maps and float trips on the Gunnison. There are special fishing regulations for the Gunnison.

The Black Canyon National Park is accessed out of Crawford to the north rim or Montrose to the south rim. Either way leads to outstanding fishing, but very steep and difficult trails limit the trip to only the hardest of hikers. An overnight backpack trip is a wonderful experience. But this is a trade-off – a day trip is less time on the water but doesn't require carrying a heavy pack. An overnight gives more time to fish, but requires hiking up a long and very steep trail with a pack.

More – This is western Colorado – with abundant public lands, particularly higher elevation national forests which provide cold water for fishing. Within a few hour's drive or less, particularly east of Delta, there



are numerous lakes and streams within an easy day-trip of Delta. Other access points include the Hotchkiss National Fish Hatchery on the North Fork of the Gunnison River, the North Fork River further upstream near Somerset, Crawford State Park, and Vega State Park. Check with the local sporting goods stores for more information. Also stop in at the offices of the Colorado Parks

and Wildlife, the Bureau of Land Management, or the Forest Service offices, all with offices in the area or with information available online.

Visitor or resident — does not matter. Take some time and go fishing.

Joel L. Evans is an avid fisherman, outdoor writer and photographer who has explored Colorado for decades.

HEIRLOOMS

FOR HOSPICE

UPSCALE RESALE

inspired by you!

Monday - Saturday • 10:00 a.m. - 5:30 p.m.
532 Main Street, Delta • 970-874-5251

.....

Proceeds from Heirlooms support HopeWest, a nonprofit organization dedicated to profoundly changing the way our communities experience aging, serious illness, and grief – one family at a time.

HOSPICE • PALLIATIVE CARE • GRIEF SUPPORT

The Arts Flourish

IN DELTA COUNTY



The newly renovated Grand Mesa Arts & Events Center opened in Cedaredge in 2018. Don Benjamin/DCI



The Creamery Arts Center in Hotchkiss features a spacious art gallery. Tripadvisor photo

BY DON BENJAMIN,
CONTRIBUTING WRITER

Delta County boasts a vibrant arts community—an enterprise so diverse that a visitor, literally, needs a program to comprehend it all. Here's a run-down in three acts:

Act One: If You Build It, They Will Come

Arts begin at the grassroots level when talented artists and performers gravitate to a region. For coastal areas of the nation, the ocean is a magnet. For other spots, a major university may provide the catalyst. In Western Colorado,

the attraction comes from the divergent chemistry of spectacular sprawling vistas and small-town audacity. People in small places tend to dream big and their dreams often materialize in the form of a repurposed historic building. Such is the case in the communities of Paonia, Hotchkiss, Cedaredge and Delta.

It may be small, but the town of Paonia packs a potent artistic punch. Two main venues sit on Grand Ave, the town's main thoroughfare. The Paradise Theatre, a movie house that traces its ancestry to 1928, is located at 215-

Grand. The Blue Sage Center for the Arts occupies vintage retail buildings which stretch from 226-228-Grand. Literally a stone's-throw apart, the two neighboring sites offer a host of shared and complementary events including live music and theatre, contemporary and vintage cinema, art shows and creative classes. Happenings often spill onto sidewalks and streets and into nearby parks. Go online for current events: the movie house is at paradiseofpaonia.com. The center for the arts is at bluesage.org. Phone the Paradise Theatre at 970-527-6610 and the Blue Sage at 970-527-7243.

The town of Hotchkiss sits at the intersection of two rural highways: Colorado 92 and 133. Self-described as "The Friendliest Town Around," the modest community has converted a former farm factory into an artistic show-place. Featuring classrooms, an art gallery, an active courtyard and performance stage, The Creamery Arts Center at 165-W. Bridge St hosts live music, art exhibits, classes and other community events. For current offerings visit the website creameryartscenter.org. Phone 970-872-4848.

Cedaredge is home to the newest addition to the Delta County arts community. Opening in June 2018, the Grand Mesa Arts & Events Center (GMAEC) occupies an historic building which, in the past, has served as a bank, a beauty shop, a repair garage, a movie theatre and a mortuary. The site currently houses an art gallery, classrooms and black box theatre. Located at 195-W. Main St in downtown Cedaredge, the place has become a popu-

lar destination and, in a very real sense, it functions as the heart of the community. For current events visit grand-mesaartscenter.com. Phone 970-856-9195. Cedaredge is also home to an artists' co-op: ImpressionZ Gallery. ImpressionZ is housed in a historic apple sorting complex known as the AppleShed which is a gallery in its own right. Both enterprises are located at 250 S. Grand Mesa Dr. The ImpressionZ website is impressionzgalleries.org; phone 970-208-6898. The AppleShed Fine Art Gallery website theappleshed.net; phone 970-856-7007.

The City of Delta has reclaimed the most imposing of the county's historic buildings by repurposing the auditorium contained in the city's old high school building. Early photographs of Delta show a three-story building which dominates the eastern fringes of the grow-

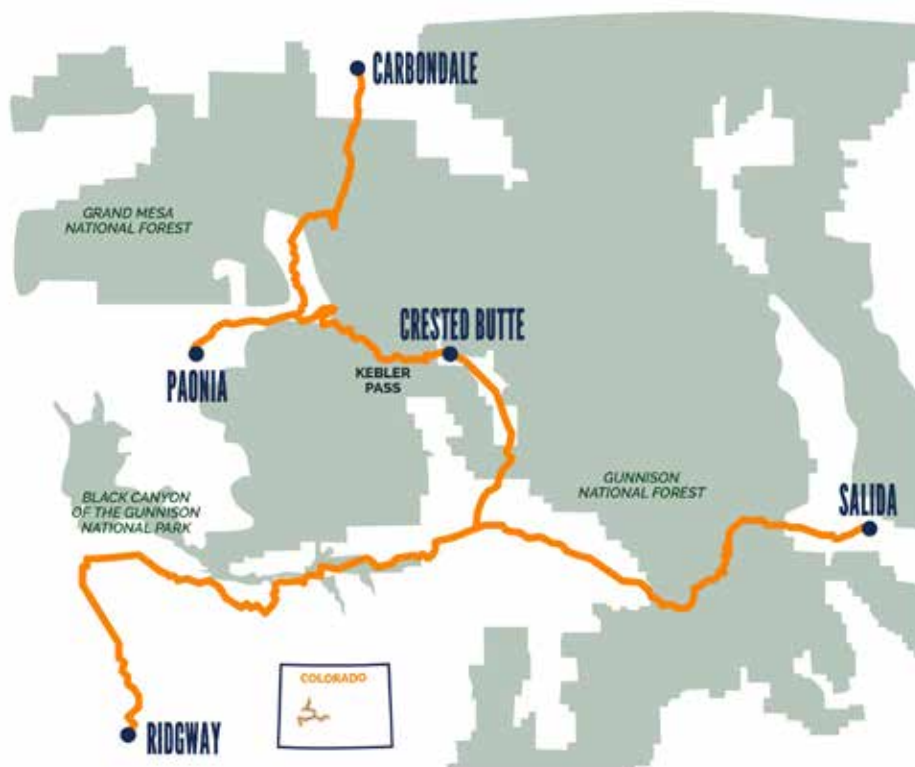
ing settlement. Graduating its first high school class in the late 1800s, the building's auditorium was in full use during succeeding decades featuring lectures, music and theatrical performances. Currently known as the Delta County Performing Arts & Education Center, the vintage building now hosts a full array of programs under the banner of The Delta-Montrose Community Concert Association. For current listings, visit the webpage concertassociation.net/DeltaCO/. Phone stage manager 970-250-5257. Delta is also home to a thriving "coalition of creatives" who gravitate around the TADA Your Art Space. Housed in a vintage downtown building at 459-Main St, TADA features a gallery and book signings by local authors. Visit their Facebook page under "today-ourartspace." Phone 970-209-5293.

Act Two: Crafting a County Mosaic

Delta County neighbors have formed an important mosaic of artistic endeavors. Managed by the North Fork Valley Creative Coalition, the Paonia Creative District is the hub of arts and cultural activity in the region adjacent to the North Fork of the Gunnison River. The coalition and its managed district encompass artists, performers and venues in the towns of Paonia, Hotchkiss and Crawford. With an emphasis on creative industries, the district promotes the diversification and stability which supports "many types of makers, including, but not limited to: visual artists, designers, performing artists, culinary artists and value-added food makers, arts activists, young artists and healing arts practitioners."

For current activities visit the

continued on next page



THE ARTS FLOURISH, CONT.

website: northforkcreative.org.

Act Three: Linking Colorado Communities

An active creative coalition and district in the North Fork region makes the town of Paonia, and therefore Delta County, part of a greater entity known as the Colorado Creative Corridor. Western Colorado communities tend to be separated by river valleys and mountain ranges and linked by rural highways which traverse high alpine passes. Weaving together unique communities along a trail which stretches for 331 miles, the Colorado Creative Corridor links five state-certified creative districts. The mountain towns of Carbondale. Crested



The North Fork Valley Community Chorus performs in Paonia. NFVCC photo

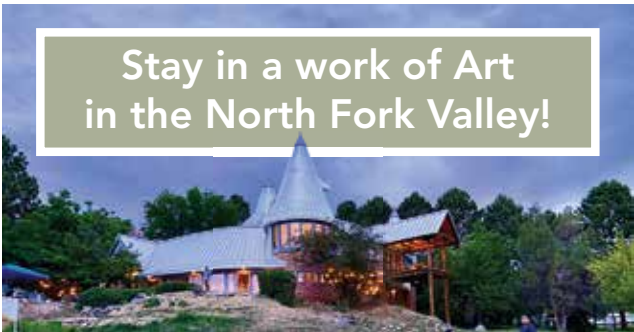
Butte, Paonia, Ridgway and Salida form the corridor. Combining things to do with hotels & lodging and lining up festivals & events, the

corridor establishes a ready-made road trip which invites visitors to sample the best of Western Colorado. For a current schedule of events

and a recommended 5-day road trip, visit the website Colorado.com/creative-corridor-channel.



The Creamery Arts Center. Creamery Arts Center/Facebook



Stay in a work of Art
in the North Fork Valley!



Hosting overnight
guests, weddings
and gatherings
of all kinds in our
artisan-built house
on Pitkin Mesa.

www.wisheartspringsinn.com | 970-527-4680



WISEHART SPRINGS INN

Ag tourism abounds in Delta County

If you or your family are hungry for a unique and tasty vacation, look no further than Delta County's beautiful and fruitful North Fork Valley. Located east of Delta, the North Fork Valley includes the communities of Hotchkiss, Crawford and Paonia.

We aren't bragging, but the North Fork Valley is home to the largest organic farms and orchards in Colorado. Because the offerings for agritourism in Delta County

are so numerous, we're going to just list a few.

Big B's Delicious Orchards is a working farm and orchard located 1 mile west of Paonia right off Highway 133. The orchard offers u-pick seasonal fun, dining, live music, tree swings and camping in different parts of the orchard. Campsites are a bit rustic, but there are spaces for tents, small campervans, pop-up trailers, or larger RVs. Big B's is open April through November.

Another fun hands-on experience awaits visitors at Orchard Valley Farms and Market. The farm northeast of Paonia is open Memorial Day to Halloween weekend. Guests can pick fresh produce from berries to pumpkins (seasonal). Or check out the farmers' market packed with goodies including sweets and sauces, jams, salsas, mustards, chutneys, honey, jerky, cheese, pickles, snacks and picnic fixings.

Beginning in May, the Arbol

Farmers' Market will be available Tuesday evenings at the Paonia Town Park. The market will feature local vendors bearing goods from gardens, orchards and creative kitchens. Other farmers' markets in the county include Delta Farmers' Market running June to September and Hotchkiss Farmers' Market at the Creamery Arts Center.

For more information on agriculture tourism in Delta County check out: vogaco.org/

Local Farmers' Markets:

Delta Farmers' Market
Fourth and Meeker Street
June-September
Wednesdays, 8 a.m. to noon; Saturdays,
8 a.m. to noon

Hotchkiss Farmers' Market
Creamery Arts Center
July - September
Saturdays, 10 a.m.-3 p.m.

Paonia Farmers' Market
Arbol Farmers' Market
Town Park
May- October
Tuesdays, 5-8 p.m.

Little Main Street Market
Presented by Delta Area Chamber, May
28-Oct. 29
Locations: Tuesday evenings, 5 p.m. to
Dusk and Saturday morning, 7 a.m. -

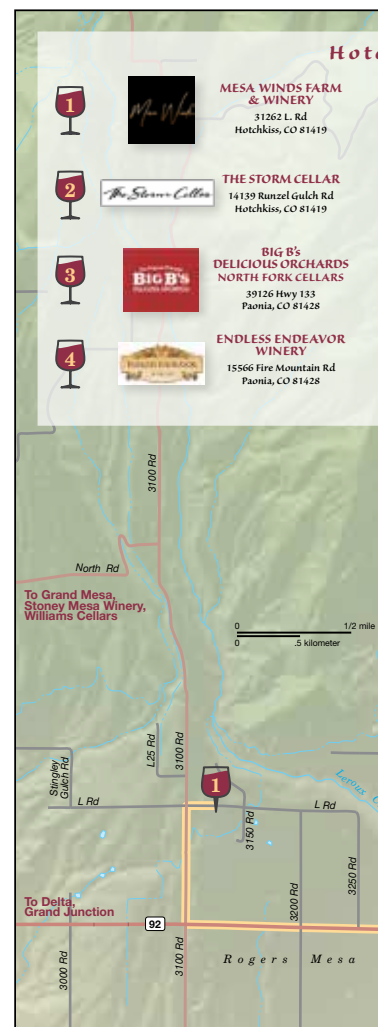
Noon - 620 Main Street;
Thursday evenings, 5 p.m. to dusk -
West Legacy Pocket Park *with live
music sponsored by the City of Delta
during the June evening markets

Crawford Farmers Market
Across from Crawford Post Office
Starting mid-May
Friday's 8 a.m. to 2 p.m., Saturday's 2 to
6 p.m.,





Make the most of Food and Wine Tours



1. Start your day wine-tasting in the high-elevation town of Cedaredge. **Williams Cellars**, **Stoney Mesa Winery**, and **Chill Switch Wines** are all great stops along a beautiful drive.
2. After your first tastings, head up to **Farm Runners Station**, 235 CO-133 in Hotchkiss, for local produce, **Blue Sky Baking Co.** for baked goods and local meat/eggs/cheese.
3. After picking up some local goods, head over to **Big B's Delicious Orchards** for lunch or dinner. This orchard

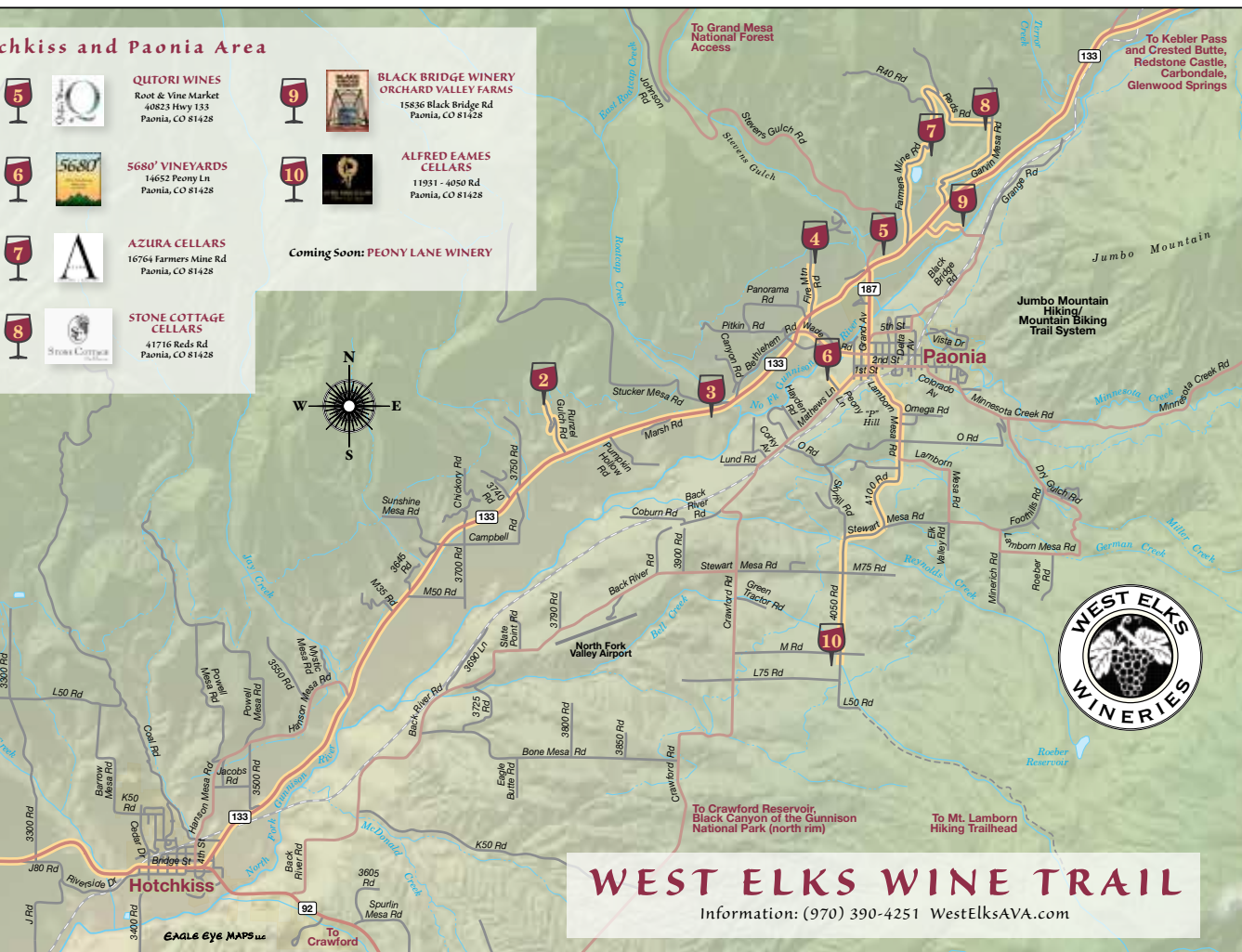
Cedaredge Area Wineries



Wine tours are just a small part of what's good about the North Fork Valley. The area is referred to as the West Elks American Viticultural Area, which is a great source for high-altitude Colorado grown and produced wines.

With the help of The Storm Cellar (a vineyard overlooking the Hotchkiss and Paonia areas atop Sunshine Mesa) co-owner Jayme Henderson, there is a mini tour around the North Fork Valley. Henderson has a background as a wine director and sommelier in the restaurant industry. She highlighted her favorite spots both for wine and for food. Here is her list along with some helpful information.

Starting in Delta...



offers you the opportunity to pick vegetables and fruits as well as a tasting room and a cafe. There are live music nights over the summer and 30 camping spaces in the orchard are available.

4. After your night camping, head to **Root & Vine Market, 40823 CO-133** in Paonia, for breakfast and coffee treats. This is also the home of the award-winning **Qutori Winery**, which is open for tastings throughout the year.
5. Lunch can be found at **Berg Harvest, 73 Samuel Wade Road** in Paonia. Henderson said there is great pizza available here.
6. After lunch, stop by some of the wineries within the towns of Paonia and Hotchkiss. **Stone Cottage Cellars**,

Azura Cellars, Mesa Winds Winery, Black Bridge Winery, Painted Vineyard are all open for tastings this summer.

7. Along your way, be sure to visit the various shops along Grand Avenue—**The Cirque** (boutique with unique gifts and local items), **Seven Trees** (gorgeous ladies boutique with fresh facials on Fridays) and the **Refinery** (boutique featuring handmade and upcycled apparel).
8. After a long day, stop in for a sweet treat at **Ollie's Ice Cream, 140 Grand Ave.** in Paonia.
9. Another place for good, local items is **Small Potatoes Barn Market and Bakery, 40575 O Road** in Paonia. This spot is open Fridays, Saturdays and Sundays, and features farm-



fresh produce and wood-fired sour-dough breads.

10. To end your tour, visit **Western Culture Farmstead and Creamery, 39883 Mathews Lane** in Paonia. This location is a goat farm with farm-fresh goat cheese.

Here are just a few tastings of the valley; for more places to visit check out the West Elks AVA Wine Trail.



3 DAYS CYCLING IN DELTA COUNTY

BY MARTY KAUZLARICH

With the plethora of cycling niches out there from mountain, gravel, road, bike packing, fat biking, E-bikes, etc. communities large and small are trying to carve out a cycling identity to entice those cyclists into their community to increase tourism, boost their economy, and share the unique beauty which surrounds them.

Moving from Iowa and a road cycling background to Delta 15 years ago, I immediately immersed myself into mountain biking. I bought a bike,

joined the local mtn biking group and began to experience (with great pleasure) all that mountain biking has to offer, while never losing my road biking roots.

15 years and multiple bikes later, I find that I cannot identify with just one cycling niche and simply identify myself as a cyclist with a craving and affinity for all types and terrains of cycling.

The City of Delta sits in a valley at around 5,000 ft of elevation between the towering Grand Mesa (world largest flat top mountain) at 10,800

ft and the vast Uncompahgre Plateau that tops out around 9,800 ft and at the confluence of the Gunnison and Uncompahgre rivers. It also lies in between two NCAs; the Dominguez-Escalante National Conservation Area (NCA) and the Gunnison Gorge Conservation Area are within 15 minutes by car.

The uniqueness of cycling in Delta County, in my mind, lies in not identifying itself in one niche but having the ability to provide routes and experiences that will suit cyclists of all levels and cat-

egories.

Entertaining visitors from all types of cycling backgrounds, what follows are 3 days of actual rides and events surrounding the riding chosen from options given to my visitors or by the flip of a coin. Keep in mind that this is just a small glimpse of the options that are available in and around the communities of Delta County.

Day 1, City of Delta: We started off with breakfast at Clyde's Café on Main Street downtown, then headed to Confluence Park as a

cycling warmup for the days to follow. Confluence Park, named for the joining of the Uncompahgre and Gunnison rivers, measures 265 acres on the edge of the City of Delta.

It includes the Bill Heddles Recreation Center, Fort Uncompahgre Interpretive Center and Living History Museum, an 18-hole disc golf course, a 70-acre fishing/paddle boarding lake, a dog park, a bike skills park, and 7 miles of walking and single-track mountain trails. This morning we started off on one side of the lake with a loop around the perimeter, riding the single track along the bank of the Uncompahgre river to confluence where it dumps into the Gunnison, then following the bank of the Gunnison River to the boat ramp and parking lot on the other side of the lake adjacent to the skills park.

Though this section of single

track is not highly technical, be mindful that if you get caught up viewing the beauty of the two rivers you could fall victim to a low branch or roots, stumps and tree limbs and rock features crossing the trail.

At this point we took some time to play for a bit on the features of the skills park. All levels of skills can be improved by riding the concrete and carved tree skin-nies, the ground level and elevated wooden single track, rock features, drop offs of varying height, the pump track and 3 levels of jumps. Whether you are a novice or expert mountain biker, you will find something to hone your skills.

We then followed one of the interior trails of tight turns, tunnel-like pathways through trees and bushes, dips and rises, flowing banked curves, and log and rock features to

add to the technical component, making our way back to where we started. At many points along the interior trails, you can feel so isolated that it is hard to believe that you are actually on the edge of town.

Loaded up, we headed back to main street downtown for lunch at A&M Creations on Main. Whatever entices your tastebuds, I highly recommend adding the sweet potato to fries.

After lunch, I gave my guests options of a relaxing walk along downtown main street to visit shops, and to view some of the murals, large and small, dotting the city that represent the history or Delta, head to the Recreation Center for a dip in the pool, or try out the 18-hole disc golf course at Confluence Park. Disc golf it was; we weaved our way through the trees and crisscrossed the

singletrack trails we had ridden earlier as we traversed the challenging course.

Now, having thoroughly depleted our energy stores, we felt we should be rewarded with a cold beer and headed back downtown to CB's Tavern to quench our thirst and stifle our rising hunger. My personal favorite is a burger with cheese and bacon and a side of onion rings.

Day 2, Gunnison Gorge NCA: After a filling breakfast at Starvin Arvin's on Hwy. 50 we headed east on Hwy 92 out to the Gunnison Gorge NCA for a more challenging track into the wilderness. Here we had several choices: Sidewinder, a singletrack trail with some highly technical areas, or one of the several 4x4 roads. We chose the 12-mile Smith Mountain Jeep Road loop.

After a slight downhill, we started the challenging climb to the top, where after a cou-



3 DAYS CYCLING, CONT.

ple miles we were finally rewarded with a majestic view of the valley to the west and the City of Delta in the distance, engulfed by the Grand Mesa on the right and the Uncompahgre Plateau on the left.

Turning east and continuing our climb, we reached the rim and the breathtaking view of the Gunnison River winding its way through the mountains at the bottom of the gorge. We followed the rim until we started the trek down to meet the river, noting that part of the final descent is a steep, narrow double track along a crevice and riddled with rocks, so a hasty descent is not advised. The remaining drop to the river is wide open, more gradual and fun to let loose of the breaks according to your experience and comfort level.

Unfortunately, there is a climb up out of the river valley along the Gunnison River, but it is gradual and mostly gravel and the views along the river will take your mind off the climbing.

This loop may take you up to 6 hours especially if you take the time to stop and take photos of the views and the unique and vibrant orange, blue, purple, red and yellow wildflowers that dot the landscape along the trail. Bring along plenty of water and some snacks!

After returning home for a quick shower, we headed to El Tapatio Mexican restaurant for dinner and a large refreshing margarita to end the day.

Day 3, Dominguez-Escalante

NCA: This day contained one of my favorite rides for the adventure cyclist in me, largely because of the views, but also because we walked out my front door, got on the bikes and took off. No loading or unloading bikes with drives to and from your destination. We biked downtown to C & J Café for breakfast. When we finished, we took 5th street west out of town which turned into G road kept straight at the "Y" and followed Sawmill Mesa Road until we came to another "Y" intersection; we veered to the right onto Escalante Rim Road. Up to this point we had ridden only on pavement.

The start of Escalante Rim Road is gravel; there is a parking lot if you so choose to drive, but I make a big loop of the trip, so I can start and finish at my house. Gravel bikes with wider tires and 29' hardtail mountain bikes are preferable; I have ridden it on both. The deeper you ride into the NCA the more the road turns into a 4x4 terrain road. When you reach the part of the rim where you can see down into the Escalante Canyon, the view is worth all the effort it took to get there. This is a good time for a rest and photo break, especially as you peer down at the road you will be taking on your descent.

The road down hugs the mountain on one side on the right, with a drop off on the left. Do not get too focused on the view during the descent as the road is full of large rocks, ruts and has multiple twists and turns, so take your time. Turn right



at the bottom and you have a couple miles until you get to Escalante Creek and yes, you will get your feet wet when you cross, but it is rarely very deep except for the early spring. After crossing the creek, you come to a T-intersection with Escalante Canyon/650 road. On this well-maintained gravel road, turn right and follow the road as it runs parallel to Escalante Creek until you get to the Gunnison River Bridge.

This is another good rest stop as you build up the energy for the challenging gravel climb out of Escalante Canyon. After the end of the climb, you have a swift downhill

that takes you to the official entrance to the Escalante Canyon at the junction with Hwy 50. Note that the final 10 miles will be on Hwy 50. Fortunately, it is a 4-lane highway with a wide shoulder to ride on, and is essentially downhill or flat.

Back in Delta, we again felt the need to be rewarded so we stopped off at Stoik Beer Company at the south end of downtown on Main Street for a cold one before riding the final mile home. To round out day 3, after a shower we ordered a pizza and went to the Tru Vu Drive In Theatre to catch the latest movie!

FALL OUT OF THE SKY AT Ultimate Skydiving Adventures



For some people, falling from 7,500 feet is second nature. But for many others, it's an experience they have yet to encounter. Ultimate Skydiving Adventures in Delta can offer you that once-in-a-lifetime experience without traveling far.

"For the people that live here, it's something new that's never been done in Delta," owner Ben Lowe said. "It allows people to see where they've been living for the past 10, 20, 30 or 40 years, and they see it in a whole different light. It offers amazing views."

For people who have jumped

before, the views offered at Ultimate Skydiving Adventures are unique to the Delta County area. The San Juans, the Gunnison River and sights out to Paonia and Crawford "allow for views that aren't seen anywhere else," visible during a four to five minute parachute ride after free fall.

Skydiving is available for both adults and kids, and packages are available to learn to skydive as well. More information, including booking and jump information can be found at ultimateskydivingadventures.com.





DELTA COUNTY FAIRGROUNDS

here for events and more



The Delta County Fairgrounds boasts over 50 acres of space for a plethora of activities, and is located in Hotchkiss. Delta County Fairgrounds hosts many events throughout the year including a Music at the Fairgrounds Summer Series featuring local bands, the annual BMW rally, a Shemanic Summer Festival, and several 4-H and FFA events. Mother's Day weekend each year brings the Hotchkiss Sheep Camp Stock Dog Trials to the fields adjacent to the Fairgrounds, which overflows into the Fairgrounds Park with lots

of family friendly activities throughout the weekend.

The Delta County Fairgrounds' beautiful park has playground equipment and a wonderful StoryWalk provided by Delta County Libraries that provides delightfully engaging stories within the park that serves as a fantastic opportunity to foster the love of reading in children, while getting outside and active at the same time. The Fairgrounds also has a disc golf course and horse shoe pits.

The Delta County Fairgrounds has one large outdoor riding



arena that hosts barrel racing, team roping, and rodeo events each summer. There is also a covered arena that is often used for small show events or sales. If you are in need of a large event space for a wedding reception, birthday party or corporate meeting, Heritage Hall is the perfect option as it will seat up to 300, and has a warming kitchen area. Smaller meetings or events can be accommodated in the Maloney House.

The Delta County Fairgrounds is home to the Delta County Fair which takes place during the first full week of August each year. This is the 117th year for the Delta County Fair "Stars, Stripes, and Summer Nights" which kicks off with a free Community Night BBQ put on by Delta County on

Friday, July 29, 2022, and is packed full of Fair events and activities through Saturday, August 6. For more informa-

tion on the Delta County Fair visit deltacountyfair.com. For additional information on the Delta County

Fairgrounds, or the use of one of the venues, visit deltacounty.com/255/Fairgrounds.



Taking a look at the past in Delta County

BY MONICA GARCIA
DELTA COUNTY INDEPENDENT

It was the summer of 1893 when three members of the McCarty Gang came into town.

On Sept. 7 the trio (Tom McCarty, his brother Bill and Bill's son Fred) executed their plan to rob the Farmers and Merchants Bank on Main Street. Days before, they had cased the bank under the guise of ranchers in the market for land. Tom stayed with the horses while Bill and Fred entered the building, guns in hand.

Tellers Andrew Blachly and H.H. Wolbert were staring down the barrels of the McCartys' guns as they were told to empty the safe. To warn attorney W.R. Robertson, an attorney who held an office at the back of the bank, Blachly yelled that the bank was being robbed. When he refused to quiet down, Fred shot him dead sounding the alarm.

Ray Simpson heard the shots and sprang into action and posted up on the corner of Main and Third streets.

Simpson, who was part owner of the local hardware store (which would eventual-



Bross Hotel

ly become Delta Hardware), was standing in the doorway of his shop with his .40 caliber Sharps rifle nearby. Rumor has it that Simpson, a dead shot with his rifle, had a dream the night before about a robbery and was discussing it with his father when he heard trouble.

After Fred shot Blachly, he and Bill grabbed a bag of coins and a stack of cash before meeting up with Tom in the alley. Tom had his gun on Robertson and soon the three fled.

As they rode away, Simpson

shot, hitting Bill with his first attempt. Fred turned around firing shots at Simpson but missed. Soon the merchant shot again, hitting Fred. Tom was able to get away.

Simpson was acknowledged nationwide for his actions. He even received telegrams from Scotland Yard congratulating him.

Events like these have put Delta County on the map. History buffs can find out more about this story as well as others that have happened around Delta County at local museums. There are two in Delta: Fort Uncompahgre Interpretive Center (440 Palmer St., Delta; 970-874-8349) and The Delta County Historical Society (251 Meeker St., Delta; 970-874-8721). One in Hotchkiss: the Hotchkiss-Crawford Historical Museum (180 Second St., Hotchkiss; 970-872-3780), and one in

Cedaredge: Pioneer Town (388 S. Grand Mesa Drive, Cedaredge; 970-856-7554).

Jim Wetzel, who is part of the Delta County Historic Landmark Board, said there are many historic buildings found throughout the county listed on the National Register of Historic Places and the Colorado State Register of Historic Properties, as well as local historic registers. As Wetzel explains, through the history of Delta County, the tearing down of many original buildings did not happen, but rather owners restored them. And now, many welcome visitors.

The Delta County Historic Landmark Board is the group that is responsible for reviewing sites. The board includes five people who represent the communities around the county. Those who would like to have a building or a site on the registry, go through a pro-



First Presbyterian Church of Eckert by Don Benjamin

cess with the board.

The applicant collects his or her supporting documentation and turns it into the board along with the application and a \$10 fee. The board reviews the material, and if it checks out, will present the information to the Delta County Commissioners requesting it to be placed on the historical register.

For those looking for the application, board members can supply it. For more information, call 970-874-8721.

Full details on Delta County historic sites on the National Register of Historic Places and the Colorado State Register of Historic Properties can be found

at historycolorado.org/national-state-register-listed-properties (filtered by "county"). There are other sites such as that of the Ute Council Tree — a cottonwood tree where the local Ute Indian Tribe would hold its council meetings which often included Chipeta (Chief Ouray's wife) — which is not listed but is a draw for tourists (a sign can be seen on the highway directing folks to the site). Information on these sites can be found at the museums.

Sites listed are:

Bross Hotel: 312 Onarga Ave., Paonia

Bruce Estate: 1468 Colorado

Hwy. 133, Paonia

Captain Smith's Cabin:
Escalante Road west of US
Highway 50, Delta vicinity

Cedar Mesa Community Club:
15637 Peach Road, Cedaredge

Cedaredge Consolidated
School: 360 N. Grand Mesa
Drive, Cedaredge

Crawford School: 425
Colorado Hwy. 92, Crawford

Curtis Hardware Company:
228 Grand Ave., Paonia

Delta County Bank Building:
301-305 Main St., Delta

Delta National Bank (Delta
City Hall): 360 Main St., Delta

Delta Post Office and Federal
Building: 360 Meeker St.,
Delta

Delta Public Library (a Neo-
Classic Carnegie Library): 211
W. Sixth St., Delta

Egyptian Theater: 452 Main
St., Delta

Elmwood School: 2876 O
Road, Hotchkiss vicinity

Fairlamb House: 700 Leon
St., Delta

Ferganchick Orchard Rock
Art Site: Austin vicinity



First Methodist Episcopal
Church of Delta, 199 E. Fifth
St., Delta

First National Bank Building:
226 Grand Mesa Ave., Paonia

First Presbyterian Church of
Eckert: 13011 Colorado Hwy.
65, Eckert

Garnethurst: 509 Leon St.,
Delta

Hotchkiss Homestead: 422
Riverside Drive, Hotchkiss

Hotchkiss Hotel: 101 Bridge
St., Hotchkiss

Hotchkiss Methodist
Episcopal Church: 285 N.
Second Ave., Hotchkiss

Lovett House: 210 Aspen St.,
Cedaredge

Mathews House: 40467
Mathews Lane, Paonia

Paonia First Christian
Church: 235 Box Elder Ave.,
Paonia

Stell House: 1122 2100 Road,
Orchard City vicinity

Stolte House: 1812 Colorado
Hwy. 65, Cedaredge

Surface Creek Livestock
Company Silos: 315 SW Third
St., Cedaredge

Tru-Vu Drive In: 1001
Colorado Hwy. 92, Delta

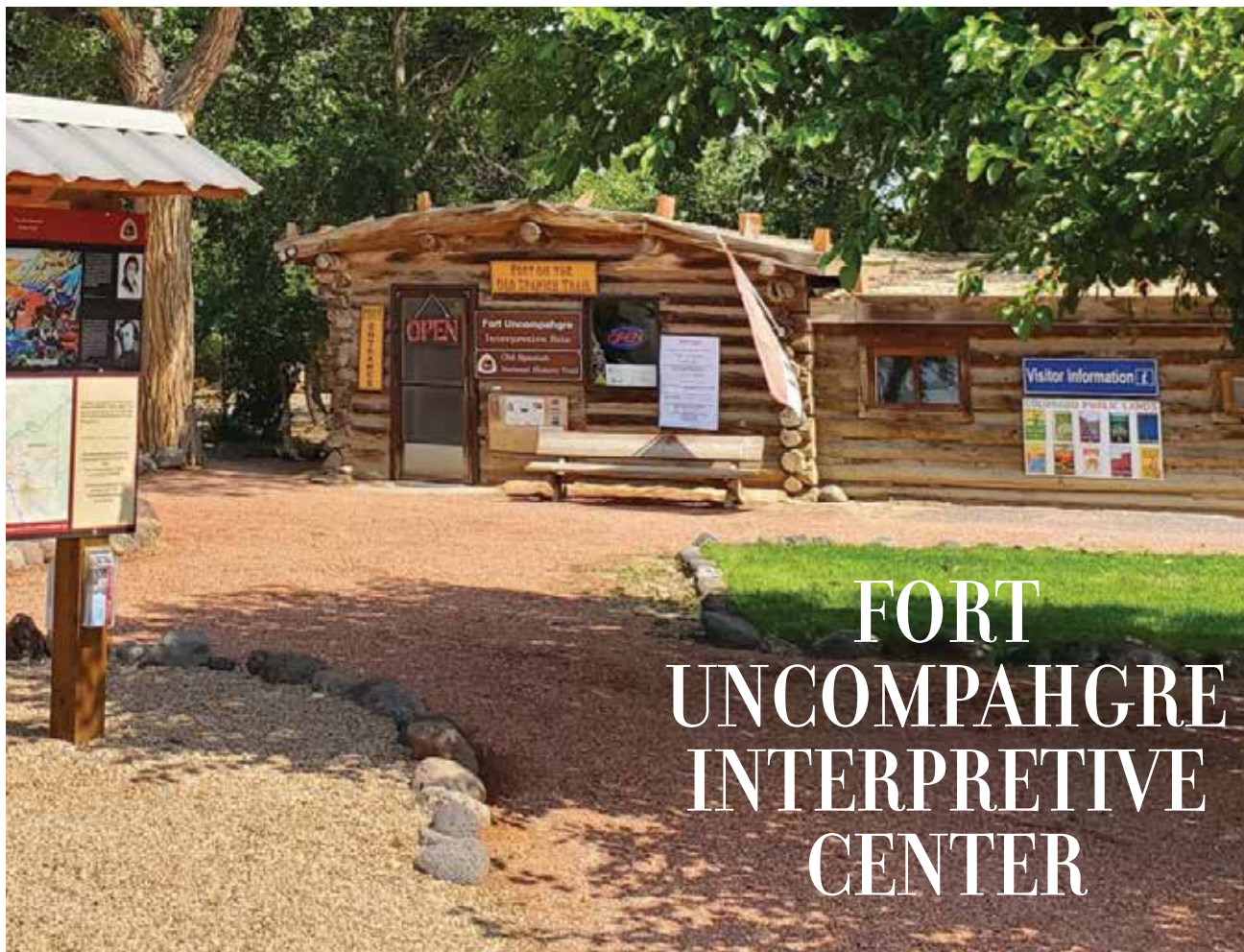
Walker Cabin: Escalante
Road, west of US Hwy. 50,
Delta vicinity



First Presbyterian Church of Eckert by Don Benjamin



Hotchkiss Methodist Episcopal Church



FORT UNCOMPAHGRE INTERPRETIVE CENTER

Visit the 1820s, in Delta

If you've ever wanted to take a trip back in time, Fort Uncompahgre Interpretive Center might be the place for you, and it's located right here in Delta.

A replica of the original fort, it takes visitors back to the 1820s and the days of the Old Spanish Trail, where everything is made to authentically replicate what folks would have seen. From furs and dirt floors, to costumes and artifacts, the history lesson begins when you arrive.

When you visit you'll go through the Visitor Center, bookstore and information center before walking around to other attractions, like a reconstruction of a trapper's cabin.

Visitors will get to interact with and learn from costumed re-enactors as they spend a day in the life of 1820s travelers and laborers. There are chances for hands-on activities as well.

The History

48 VISIT DELTA COUNTY 2022



(From FortUncompahgre.org)

Antone Robidoux established the trading outpost in the late 1820's in an area known as Robidoux Bottoms near the junction of the Gunnison and Uncompahgre Rivers just west of Delta, Colorado. This area was a hub for trails coming north out of the San Juan River Basin in South Western Colorado and



north western New Mexico, meeting the North Branch of the Old Spanish Trail (a pack route traveling east and west from Santa Fe to Los Angeles).

The Fort remained in operation until the mid-1840s before being attacked by a band of Ute Indians. It has been speculated that the attack on Fort Uncompahgre was the result of built up Ute hostility stemming from the introduction of "Taos lightning" in the 1840's.

With the decline of the beaver population in the inter-mountain west, compounded by changes in clothing styles, the days of the mountain men were numbered. In 1846, Antione Robidoux joined General Steven Watts Kearny as in interpreter in Kearny's campaign to the West in the War with Mexico. Later expeditions through the area would note Fort in passing with time taking it's toll on the structure.

Special Events and More

Christmas at the Fort takes place in early December each year following the annual Delta Parade of Lights. People can

meet and sing Christmas carols and share in festivities.

The fort also has a Mexican Heritage Celebration in September.

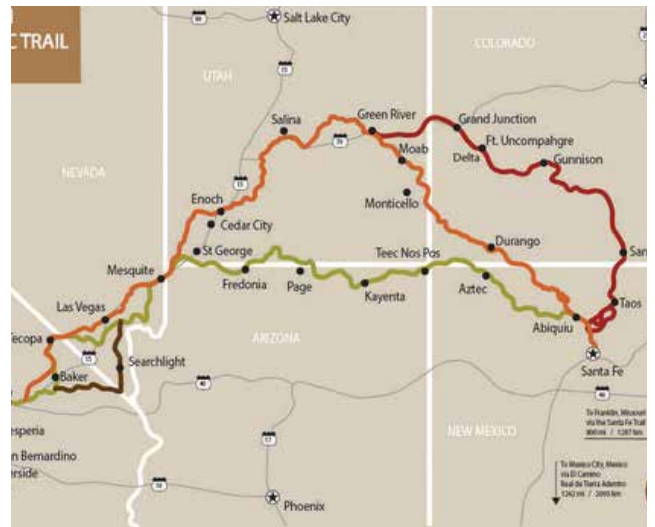
More events include Saturday Trade Days and Deltarado Days, a VFW American flag retirement ceremony on the last Saturday in September, a Robidoux Artist Camp, and Mountain Men and the Stars.

...

Fort Uncompahgre Interpretive Center is located at 440 N. Palmer St. in Delta.

*Winter Hours:
Tuesday – Saturday,
10 a.m. – 5 p.m.*

Summer Hours: Monday – Saturday, 9 a.m. – 5 p.m.



Winter hours are in effect until May 1.

FortUncompahgre.org; 970-874-8349



Many places to pitch a tent in and around Delta County

Like all of the Western Slope of Colorado, there is camping abound in Delta County, whether you like to get in the backcountry or take your family to a nice camping spot, there are endless possibilities for you and your family to get out and camp.

State Parks

Delta County is home to three beautiful state parks that range in scenery and activities.

The first is **Crawford State Park**. It's near the Black Canyon of the Gunnison (one of Colorado's national parks).

Crawford State Park has fishing, boating, hiking and

more. It makes for a nice retreat for outdoor recreation, but there is also camping available. It's by reservation only. But for 2022, there may be less camping due to construction at the Clear Fork Campground, so call before you go.

cpwshop.com or 800-244-5613.

Paonia State Park plunges deep into nature as a narrow lake park. There are steep mountainsides, beautiful water attractions, alpine scenery and plenty more for nature lovers. In addition to water-skiing, picnicing and sightseeing, there is some camping available. But there



is no drinking water available in the park, so bring your own water.

cpwshop.com or 800-244-5613.

Sweitzer Lake State Park is known well to locals. It started out as a dream for the community and provides tons of recreation and relaxation for locals in addition to visitors. It was built solely for recreation, so this is the one state park where you aren't going to find anything in the way of camping. But there are

plenty of park activities you can find on the 210 acres and in the 137-acre reservoir in the park.

Unique Camping

While there are plenty of public lands, there are some unique adventures in camping on private campgrounds.

One good example is **Big B's Delicious Orchards** in Paonia. They call it "The Campground at Big B's" and it offers a chance to camp among the orchards that grow fruit for delicious cider.



They offer showers and several campgrounds. They also allow pets to these campgrounds, which include spots for tents, cars, campers and RVs. Depending on the site, the cost varies.

bigbs.com/camping or email camping@bigbs.com or text/call 970-812-3342

More Public Lands and Backcountry Camping

The Dominguez-Escalante National Conservation Area comprises 210,172 acres of protected public lands and includes the 66,280-acre Dominguez Canyon Wilderness. It's one of the gems of the area, located between Grand Junction and Delta County.

It's managed by the Bureau of Land Management, so that means you can camp pretty much anywhere you'd like, if you're adventurous enough. During the day, people find fun recreating on trails with mountain bikes, dirt bikes and more.



They also offer plenty of fun in the form of hiking and floating (the Gunnison River flows through the area).

blm.gov

Cottonwood Grove Campground is another popular spot in Delta. It actually has six campsites, but is on BLM land, so camping can be done in more than just the campsites.

Site amenities include a boat ramp, shade structures, pic-

nic tables, fire rings and a vault toilet. It gives people access to water recreation and beaches for yourself or your pet.

blm.gov/visit/cottonwood-grove-campground

Island Lake Campground, near Cedaredge, is at 10,000 feet and located on Colorado's Grand Mesa, which is home to more than 300 fishing lakes.

It is part of the Grand Mesa,

Uncompahgre and Gunnison National Forest (GMUG). There's endless recreation around this beautiful camping location. And though it's beautiful, Island Lake is just one of several camping spots on the Grand Mesa. It looks out at one of the hundreds of beautiful mountain lakes on the mesa.

To book: recreation.gov/camping/campgrounds/233387





Grand Mesa:

WORLD'S LARGEST FLAT TOP, IN THE BACK YARD



BY LUCAS VADER
DELTA COUNTY
INDEPENDENT

Where to start...

Visitors, welcome to Grand Mesa, which so happens to be the largest flat top mountain in the world at over 500 square miles.

For a drive over the top, Highway 65, referred to in the area as the Grand Mesa Scenic Byway, will do the trick.

For nearly countless different spring and summer adventures, modern technology with Colorado Parks and Wildlife (CPW) covers the bases with its app

COTREX, which stands for Colorado Trail Explorer. It's available in most app stores.

Hiking

One must-see hike on the Delta County side of Grand Mesa is that of Crag Crest. It has two different trails that connect to the same parking lots on either end. The upper trail is around 6 miles and gets the share of the scenery, while the lower trail is 4 miles and easier.

If hikers coordinate and bring two vehicles (one for each parking area), groups can choose one or the other. For the more gung-ho of the

crowd, only one vehicle would be necessary to hike the full 10-ish miles across one trail and back across the other.

Crag Crest's larger parking space is just off the right side of the highway shortly after Ward Creek Reservoir, which is no more than a 20-minute drive from the Town of Cedaredge down below.

The other end is past the Grand Mesa Visitor Center and the Alexander Lake Lodge, also marked off the right side of the highway, after Ward Creek Reservoir but before the west Crag Crest lot. If you reach that lot, you've gone too far.

Other trailheads are available right off the highway, marked and mapped on site, including a system around Ward Creek and Cobbett Lake, as well as the Land o' Lakes area. Grand Mesa hiking is generally only available in warmer months of the year.

Biking

The COTREX app works with biking areas, too. Often, they're the same scenic trails where folks hike.

Crag Crest is excluded as an official biking trail here



(especially up top where there are mountains on either end) but Ward Creek and Cobbett Lake are still options.

As for obtaining a bike, if one is not already owned, the Town of Cedaredge has a business, Silent Custom Cyclery, which turns out refurbished bicycles of varying quality at much reduced prices from a brand new rig.

Skiing and snowshoeing

In the winter months, Grand Mesa provides bountiful options for some nordic



activity. That time of year, Grand Mesa Outdoors has cross country skis and snowshoes for rent, and the Grand Mesa is the place to use them.

The Grand Mesa Nordic Council is the group in charge of grooming for your winter activities up top, and at gmnc.org, it provides official maps for doing so.

Most immediately off the highway, check out the Ward Creek trail system, which is ideal for both. Further out, there's the County Line trail system, which features more ups and downs for the crowd that's into that kind of thing.

And there's a classic sled-ding hill, also at Ward Lake Reservoir. It's a happening place.

More outdoors

As for everything else, only laws, common sense and good friends will tell you what you can't do.

This issue includes a piece on Delta County water activities, though.

Grand Mesa is regularly seen as a Delta County treasure, an oasis away from the bustle below and an ever-perfect Father's Day picnic spot, among everything else.





Water 'round here

BY LUCAS VADER
STAFF WRITER

Already as March was closing out, Delta was hitting temperatures in the low 80s. Delta County will have a very warm summer ahead of it.

Luckily, around these little mountain towns are charming adventures that graciously include water.

Stand Up Paddle Boarding

The big one around here is being able to stand on the water and slow-speed surf around on Delta County's lakes.

Recommendations by Western Slope SUP, located in Hotchkiss, include the Gunnison River, Ruby Canyon and Horsethief Canyon. Western Slope SUP also boasts the best quality brands of paddle boards, which can be rented out to

the public.

In the Surface Creek Valley area, folks have Grand Mesa Outdoors in Cedaredge to set them up. As a general outdoor supply store, it logically supplies whatever seasonal fun-lover gear is necessary at the time.

Grand Mesa Outdoors is ideally located for Grand Mesa adventures, as the world's largest flat top mountain (featured in this publication) presents more than 300 alpine lakes and reservoirs, including the Eggston Lake area, Baron Lake and Island Lake, most a short detour off

the main highway.

Rafting and Kayaking

Delta County also has connections to rafting and kayaking outings, particularly through Western Slope SUP.

If it's May-October, ask about the Gunnison Gorge NCA



River Tour, a beginner journey that includes instruction and has the options of kayaks, stand up paddle boards and rafts. The guide, the instruction, transportation and all the equipment is included in the package for a half day up to a full day. \$85-\$129 for adults, \$99-\$119 for ages 12 and under.

There are also organized rafting trips through Western Slope SUP in the Gunnison Gorge, North Fork Gorge, Heart of the Valley and Anthracite Creek.

Visit westernslopesup.com and grandmesaoutdoors.com for more details on either location.

Just Swimming

Or one could just take a step back and chillax with the family.



Bill Heddles Recreation Center in Delta, on Gunnison Avenue, has been a long-time destination for indoor swimming with its traditional 25 yard main pool, a tot pool, a medium pool with lazy river and a hot tub, of course.

For outdoor swimming, the North Fork Pool in Hotchkiss is the place to go, just behind that mountain with the H on it.

The North Fork Pool features a main pool, a tot pool and a hot tub as well as a water

slide.

Visit cityofdelta.net and northforkrecreation.com for live information on Bill Heddles Rec Center and the North Fork Pool respectively.

Visiting Delta County?

We've Got It All!

Delta

Cedaredge

Eckert

Hotchkiss

Paonia

Crawford

Don't forget to stop at local Visitor Centers and Chambers of Commerce

DELTA AREA
CHAMBER OF COMMERCE

Delta Area Chamber of Commerce & Visitor Center
Located at 301 Main Street, Delta, CO 81416

Pioneer Town Welcome Center
388 S Grand Mesa Dr., Cedaredge, CO 81413
Open Memorial Day weekend thru September

HCCC HOTCHKISS COMMUNITY CHAMBER OF COMMERCE

Hotchkiss Community Chamber of Commerce Information Kiosk
Located at 406 Highway 133, Hotchkiss, CO 81419

PAONIA CHAMBER OF COMMERCE

Crawford Chamber of Commerce

& Visitor Information
236 Grand Avenue
Paonia, CO 81428

Visitor Information
425 Highway 92
Crawford, CO 81415

NO MATTER WHICH WAY YOU LOOK, THERE'S ALWAYS SOMETHING TO DO

Photo of Confluence Lake in Delta. Courtesy of Chad Cogdill

VISIT DELTA COUNTY 2022 55

Look to the sky this summer and fall

COMPILED BY THE DCI
STAFF AND BLACK CANYON
ASTRONOMICAL SOCIETY

Wherever we are in the world, there is one thing that everyone can see — the night sky. Especially on the Colorado Western Slope, rural communities make for less light pollution and better viewing conditions to spot celestial objects near and far.

"The night sky's out there for everyone, and fortunately on the Western Slope we're blessed with a pretty dark sky," said Art Trevena, vice president of the Black Canyon Astronomical Society. "It's something we can enjoy from home, you don't necessarily have to travel to enjoy it."

Although first starting out can be daunting, there are resources that allow you to identify exactly what you're seeing in the sky and begin to get a sense of direction of the cosmos.

The Black Canyon Astronomical Society recommends using a smartphone app, planisphere or star chart to help with locating and identifying objects in the sky. Stellarium and Sky Safari are apps that can identify objects when a phone camera is pointed up at the sky, giving people a more direct way to navigate the stars.

When people think of stargazing, they often imagine using a telescope. While telescopes can be helpful and reveal even more of the deep sky, many night sky objects are visible with the naked eye, and can be enhanced further using binoculars.

"Just your unaided eyes are great for seeing things like the Milky Way and spotting the planets, or spotting flyovers of brighter Earth satellites," Trevena said. "If you want to see things in a little more detail, just standard binoculars are very, very good."

The easiest thing to spot in the night sky and introduce yourself to stargazing (especially with kids), is the moon. Phases directly affect how visible fainter objects are in the sky, so a new moon is best for viewing other celestial objects while a full moon can offer views of dark maria (lunar "seas") and bright "ray" craters with binoculars. Some phases offer other views, as well.

"When the moon is in its crescent phase, it's absolutely amazing to look at because not only is the crescent beautiful, but often as the twilight lessens and the sky gets darker, you can see the dark part of the moon illuminated by what's called earthshine, which is the earth shining on the moon," Trevena said.

Many people are also interested in spotting the International Space Station and other bright Earth satellites, such as the U.S. Air Force X-37B Space Plane. These can be viewed easily if you know where in the sky to look for them, and multiple online resources are available to show you the paths of these objects in Earth's orbit.

Predictions for when you can spot the International Space Station can be found

at spotthestation.nasa.gov/sightings, and predictions for other bright Earth satellites can be found at heavens-above.com/main.aspx or at james.darpinian.com/satellites.

While many towns in Delta County have fairly dark skies to view celestial events and objects, even better observation can take place at Black Canyon National Park, on top of the Grand Mesa, the Uncompahgre Plateau, Ridgway State Park and other public lands that are a little farther away from civilization.

Dark Skies Paonia has a draft lighting ordinance for the Town of Paonia. According to its site, Dark Skies Paonia is a 501c3 non-profit that focuses on "educating and advocating for the benefits of the dark night skies and about the growing threat of light pollution occurring around the globe, its effects on our health, the health of the environment and all things that call our planet home." There have been less bright street lights installed in Paonia, the group holds events and its website is full of information — darks skiespaonia.com.

The Black Canyon Astronomical Society typically hosts meetings and events for the public to learn about the sky above them, but amid the pandemic, this outreach has moved online. Resources and education are still available to those interested. Meetings, which will be accessible online, will take place on Thursday evenings, April 22, May 27, June 24,

July 22, Aug. 26, Sept. 23 and Oct. 28.

More information on the Black Canyon Astronomical Society can be found at blackcanyonastronomy.com or by emailing bcas.club@gmail.com.

Whether you're new to stargazing or have been gazing up for years, the universe always has something new to offer the people of Earth.

Things to see:

Our own galaxy: On June evenings, the central Milky Way rises in the southwest. The Milky Way will be higher in the sky later this summer, and is best viewed on evenings without bright moonlight: June 2 through 14, July 1 through 13 and Aug. 1-12, Aug. 30 - Sept. 10, and Sept. 29 - Oct. 9. While it is visible from many small towns on the Western Slope, the Milky Way can be brighter in darker skies, such as in local national parks or on top of the Grand Mesa.

Eclipses of the Moon and Full Moons: There is a total eclipse of the moon on the morning of May 26. The partial phase of the eclipse starts at 3:45 AM MDT, and the greatest eclipse occurs at 5:19 a.m. MDT in morning twilight. Lunar eclipses happen when the full moon passes through Earth's shadow. The moon is full on April 26-27, May 25-26, June 24, July 23-24, Aug. 22, Sept. 20, Oct. 20, Nov. 18-19 and Dec. 18-19. The full moon of Nov. 18-19 will undergo a partial eclipse during the wee hours



Milky Way rising with bright Jupiter and Saturn at lower-center, taken north of Cedaredge, June 14, 2020. ©Joyce Tanihara, 2020.

November 19, maximum eclipse happening at 2:03 a.m. MST, when 97% of the moon will be immersed in Earth's dark shadow.

Crescent moons and earthshine: The next waxing crescent moons will be on April 15 to 19, May 12 to 18 (with the moon very near Venus on May 12), June 11 to 17 (moon near Venus on June 11), July 11 to 16 (moon near Venus and Mars on July 11), August 9 to 14, September 8 to 12, October 7 to 12, November 5 to 10, and December 5 to 10. When the lunar crescent is thin. The hidden, dark part of the moon can be seen in sunlight being reflected off the Earth. This is called "earthshine," and sometimes referred to as "the old moon in the new moon's arms."

Views through binoculars can be striking!

Perseid Meteor Shower: The Perseids are one of the best and most reliable meteor showers of the year. The best time to view will be Aug. 9 to 14, and meteors will be visible from 11 p.m. MDT to morning twilight (although they're best during the wee hours before dawn). You may see as many as 100 meteors per hour with your eyes unaided in the wee hours of Aug. 12 and 13. Meteors are often called "shooting stars." The Perseids are icy and rocky debris shed from Comet 109P/Swift-Tuttle. Perseid meteors appear to emanate (or "radiate") from the constellation Perseus, but they are visible in all parts of the sky. August 2021 will be

a great time to view Perseid meteors, because the waxing crescent moon will set early, and the sky will be very dark after 11 p.m.

Planets: Venus will be a brilliant "evening" star above the western horizon from May through the remainder of 2021. And fainter Mercury will make its best evening appearance for 2021 during May, when it will be visible in evening twilight just above the western horizon. Be sure that the sun has set before trying to spot Venus and Mercury. Looking at the sun directly can cause serious eye damage and even blindness. Rust-colored Mars, though fading, will be visible in the western evening sky through July. There will be some close planetary conjunc-

tions in the evening that will be nice sights in binoculars, including Venus and Mercury on April 25 and May 28, Mars passing in front of the "Beehive" star cluster (aka M44) on June 23, and Venus and Mars on July 13, and Venus and Mercury (again!) on December 28. Saturn, the ringed planet, rises before morning twilight in April and May and becomes visible in the evenings by mid-July. 2021 is a great year for viewing Saturn's beautiful rings through a telescope. Bright Jupiter rises in the wee hours during April and May and becomes visible in the evenings by August. You can see Jupiter's four brightest moons through binoculars or a small telescope.

Come together at the Delta County Libraries

BY MONICA GARCIA
DELTA COUNTY INDEPENDENT

If you find yourself in Delta County, there's one bit of home you can take advantage of — the public library.

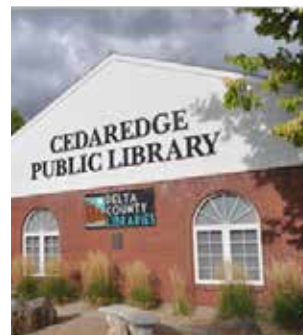
Delta County Libraries serves all of Delta County through five library locations and a robust online library. The libraries are located in Cedaredge, Crawford, Delta, Hotchkiss, Paonia and online at deltalibraries.org. Its mission is to serve and empower people by providing resources for life, leisure, and learning.

The libraries offer access to thousands of print, audio, visual, and electronic materials, high-speed internet and public computers, programs for all ages, reference help, technology assistance, a Seed Library, equipment and gear for checkout, business and school resources, and so much more!

Here are a few offerings to look for at the Delta County Libraries:

Access to public computers and high-speed internet. One offering many visitors and residents enjoy is the accessibility of library computers and the internet. Hotspots and Chromebooks are available for checkout (with a library card). There is also 24-7 access to public internet near library buildings.

Through this offering, with a library card, patrons can download a book or audio-book onto devices and even stream a movie. They also have access to Freegal — a



music service that offers music downloads and streaming access to millions of songs from over 28,000 labels.

Visitors who have a library card from another county in Colorado can visit one of our libraries and get a Delta County Libraries card. Visitors will have full access to all of the wonderful resources available at the libraries including 24-hour access to the online library from any location, hotspots and Chromebooks, map kits for local wilderness areas, outdoor gear and Colorado State Parks Passes. All items on this list are available on a first-come, first-served basis for a one-week checkout period to patrons with a library card in good standing.

Four StoryWalk® locations in Delta County. A StoryWalk® is a children's book that is

spread out through a series of posts along an outdoor trail or in a park found around Delta County. The stories are geared toward early readers, but can be enjoyed by the entire family. These Storywalks® are updated every two months and are located in Cedaredge at the Surface Creek Trail, Delta at Sweitzer Lake State Park, Crawford at Crawford State Park, and Hotchkiss at the Delta County Fairgrounds. This program has been available in Delta County since 2016. For more information on this program, visit deltalibraries.org/story-walk/.

Programming for all ages. The libraries offer a wide-range of programming for all ages, including an annual Summer Reading Program and special events, clubs, Storytimes, activities, and assistance year-round.



Location information is as follows :

Cedaredge —
180 SW Sixth Ave.,
970-399-7674.

Crawford —
545 Highway 92,
970-399-7783.

Delta — 211 W. Sixth
St., 970-874-9630.

Hotchkiss — 149 E.
Main St., 970-399-778.

Paonia — 80 Samuel
Wade Road,
970-399-7881.

Relocating

DELTA COUNTY

560 Dodge St.,
Delta, CO 81416
970-874-2100

www.deltacounty.com

TOWN OF CEDAREDDGE

235 W. Main St.,
Cedaredge, CO 81413
970-856-3123

www.cedaredgecolorado.com

TOWN OF CRAWFORD

425 Hwy 92,
Crawford, CO 81415
970-921-4725

townofcrawford.colorado.gov

CITY OF DELTA

360 Main St.,
Delta, CO 81416
970-874-7566

www.cityofdelta.net

TOWN OF HOTCHKISS

276 W. Main St, Hotchkiss, CO
81419

970-872-3663

townofhotchkiss.colorado.gov

ORCHARD CITY

9661 2100 Rd.,
Orchard City, CO 81410
970-835-3337

www.orchardcityco.org

TOWN OF PAONIA

214 Grand Avenue,
Paonia CO
970-527-4101

townofpaonia.colorado.gov/

DELTA MONTROSE ELECTRIC ASSOCIATION

11925 6300 Rd,
Montrose, CO 81401
877-687-3632

www.dmea.com

BLACK HILLS ENERGY

888-890-5554

www.blackhillsenergy.com

JC PROPANE

1014 1200 Rd.,
Delta, CO 81416
970-874-5381

www.jcpropane.com/

PIONEER PROPANE

743 1325 Rd,
Delta, CO 81416
970-874-9100

www.pioneerpropaneinc.co/

ELEVATE

11925 6300 Rd.,
Montrose, CO 81401
844-386-8744

www.elevateinternet.com/

CHARTER SPECTRUM

1-855-243-8892

www.spectrum.com/

TDS

1-855-220-2592

tdstelecom.com/shop.html

DOUBLE J DISPOSAL

20754 Austin Rd.,
Austin, CO 81410
970-835-8886

double-j-disposal.business.site/ |

DELTA HEALTH

1501 E. 3rd St.,
Delta, CO 81416
970-874-7681

www.deltahealthco.org/

HOPEWEST

195 Stafford Lane,
Delta, CO 81416
970-874-6903

www.hopewestco.org

DELTA COUNTY SCHOOL DISTRICT

145 W. 4th St.,
Delta, CO 81416
970-874-4438

www.deltaschools.com

TECHNICAL COLLEGE OF THE ROCKIES

1765 US Hwy 50,
Delta, CO 81416
970-874-7671

www.tcr.edu

DELTA COUNTY LIBRARIES

149 E. Main,
Hotchkiss, CO 81419
970-399-7876

deltalibraries.org

DELTA AREA CHAMBER OF COMMERCE

301 Main St.,
Delta, CO 81416
970-874-8616

www.deltacolorado.org

HOTCHKISS

COMMUNITY CHAMBER
OF COMMERCE
970-872-3226

www.hotchkisschamber.com/

CRAWFORD AREA CHAMBER OF COMMERCE

www.crawfordcountry.org

DELTA COUNTY BOARD OF REALTORS

724 Main St.,
Delta, CO 81416
970-874-4727

dcbor.com

DELTA WORKFORCE CENTER

206 Ute St.,
Delta, CO 81416
970-874-5781

cdle.colorado.gov/wfc

ONE DELTA COUNTY: AN ECONOMIC ALLIANCE

560 Dodge Street
Delta, CO 81416

(970) 874-2188 (office)

(970) 275-0717 (cell)

gpope@deltacounty.com





Delta County

COLORADO

Canyons • Rivers • Mountains